

TESTED TO COMPLY WITH



ASTM
E3022-18
Standard

SPECTROLINE®
NDT

DISTRIBUÉ PAR / DISTRIBUTED BY:

QNDE
QUALITY NDE LTD

QUEBEC

164, St-Jean-Baptiste
Montréal, QC J6R 2C2
450-691-9090
info@qnnde.ca

ONTARIO

275, Sheldon Drive, Unit 3
Cambridge, ON N1T 1A3
519-894-9099
nadams@qnnde.ca

ALBERTA

7307, 50 street NW
Edmonton, AB T6B 2J9
587-689-6811
lfields@qnnde.ca

www.qnnde.ca

1-800-361-3630

PowerMAX™ 365

UV-A LED Panel Flood Lamp

PM-16B & PM-32B

- ▶ Nominal steady-state UV-A (365 nm) intensity of **6500 $\mu\text{W}/\text{cm}^2$** at 15 in (38 cm)
- ▶ Low visible light emission—less than 0.5 foot-candle (2.2 lux)

Ideal for:



**NDT
INSPECTION
BOOTHS**



**FLUORESCENT
PENETRANT AND
MAGNETIC PARTICLE
INSPECTION**



**WASH STATION
INSPECTION**



**SCREENING OF
FLUORESCENT
PARTICLES**

ROCKER SWITCH

Easily switched between UV & White Light

MOUNTABLE

For overhead inspection or in-line applications

ELECTRONIC INTENSITY CONTROL

Capable of adjusting light output

ALUMINUM HOUSING

Built for use in the most rugged environments

LONG LASTING LEDs

INTEGRAL UV-A PASS FILTERS

Reduce visible wavelengths

PowerMAX™ 365 PM-16B & PM-32B

MODEL	NOMINAL STEADY-STATE UV-A INTENSITY WITH FILTER at 15 in (38 cm) ①	UV-A COVERAGE AREA at 15 in (38 cm) at minimum 1,200 $\mu\text{W}/\text{cm}^2$	WHITE LIGHT INTENSITY	VISIBLE LIGHT MEASUREMENT
PM-16B	6,500 $\mu\text{W}/\text{cm}^2$	23.6 x 10.63 in (60 x 27 cm)	>325 foot-candle (>3500 Lux)	<1 foot-candle (<10 lux)
PM-32B	6,500 $\mu\text{W}/\text{cm}^2$	43.3 x 10.63 in (110 x 27 cm)	>325 foot-candle (>3500 Lux)	<1 foot-candle (<10 lux)

① UV-A intensity reading taken with the Spectroline® AccuMAX™ Series meter, and is factory set to the value shown.

	PM-16B	PM-32B
Light Source:	16 UV-A LED'S & 4 White LED'S	32 UV-A LED'S & 8 White LED'S
Lamp Style:	Panel Flood Lamp	Panel Flood Lamp
Length:	19.1 in (48.5 cm)	37.8 in (96 cm)
Width:	6.7 in (17 cm)	6.7 in (17 cm)
Height:	3.94 in (10 cm)	3.94 in (10 cm)
Weight:	16.5 Lb (7.5 Kg)	34.1 Lb (15.5 Kg)
Intensity Control:	From 10% - 100%	From 10% - 100%
Power Requirements:	100V - 264V, 50-60 Hz	100V - 264V, 50-60 Hz

PowerMAX™ 365 UV-A LED Panel Flood Lamp Kit

Comes complete with PowerMAX™ 365 UV-A LED Panel Flood Lamp, Power Cord, Chain and Hooks.

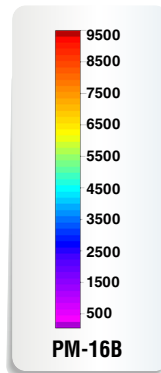
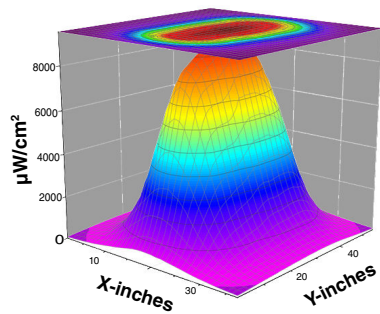


PowerMAX™ 365
PM-32B

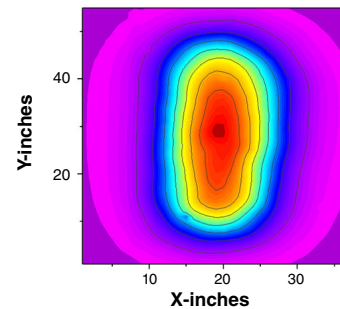
UV-A Beam Profiles

PM-16B

Surface Contour Profile at 15 in (38 cm)

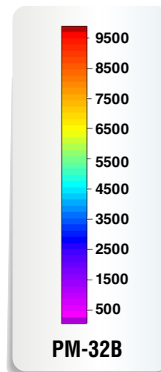
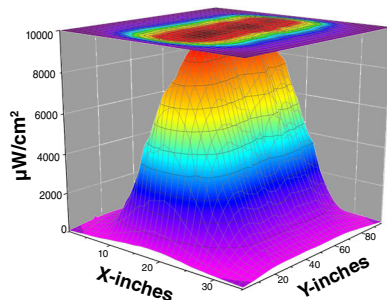


Top Intensity Profile at 15 in (38 cm)

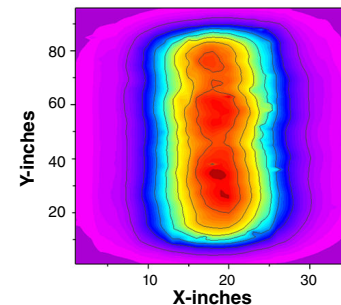


PM-32B

Surface Contour Profile at 15 in (38 cm)



Top Intensity Profile at 15 in (38 cm)



DISTRIBUÉ PAR / DISTRIBUTED BY:

QNDÉ
QUALITY NDE LTD

QUEBEC

164, St-Jean-Baptiste
Mercier, QC J6R 2C2
450-691-9090
info@qn timer.ca

ONTARIO

275, Sheldon Drive, Unit 3
Cambridge, ON N1T 1A3
519-894-9089
nadema@qn timer.ca

ALBERTA

7307, 50 street NW
Edmonton, AB T6B 2J9
587-689-8811
llfids@qn timer.ca

www.qn timer.ca

1-800-361-3630