

TESTED AND COMPLIES WITH



ASTM
E3022-18
Standard

SPECTROLINE®
NDT

DISTRIBUÉ PAR / DISTRIBUTED BY:

QNDE
QUALITY NDE LTD

QUEBEC

164, St-Jean-Baptiste
Mercier, QC J6R 2C2
450-691-9090
info@qnnde.ca

ONTARIO

275, Sheldon Drive, Unit 3
Cambridge, ON N1T 1A3
519-894-0903
nadams@qnnde.ca

ALBERTA

7307, 50 street NW
Edmonton, AB T6B 2J9
587-690-4811
lfields@qnnde.ca

www.qnnde.ca

1-800-361-3630

CLASSIC SERIES

LED INSPECTION LAMP

CLA-100 + CLA-100Z

- ▶ Nominal steady-state UV-A (365 nm) intensity of **5,700 $\mu\text{W}/\text{cm}^2$** at 15 in (38 cm)
- ▶ Low visible light emission—less than 0.5 foot-candle (2.2 lux)



Dust Tight & Water Resistant



Fanless & Cool Running



Lightweight & Rugged



Instant-On Operation

ROCKER SWITCH

Easy on/off operation with rear Rocker switch

RUBBER BUMPER

Protects LED's from damage

LONG-LASTING UV-A LENSES

Equipped with UV-A Pass Filter

PISTOL GRIP

Comfortable, balanced control

ANODIZED ALUMINUM HOUSING

Minimizes corrosion and stands up to years of heavy use



CLASSIC SERIES CLA-100 & CLA-100Z

MODEL	BATTERY OPERATED	NOMINAL STEADY-STATE UV-A INTENSITY at 15 in (38 cm) ①	UV-A COVERAGE AREA at 15 in (38 cm) at minimum 1,000 $\mu\text{W}/\text{cm}^2$	VISIBLE LIGHT MEASUREMENT
CLA-100		5,700 $\mu\text{W}/\text{cm}^2$	6 in (15.25 cm)	>350 foot-candle
CLA-100Z	●	5,700 $\mu\text{W}/\text{cm}^2$	6 in (15.25 cm)	>350 foot-candle

① UV-A intensity reading taken with the Spectroline® NDT AccuMAX™ Series meter, and is factory set to the value shown.



	CLA-100	CLA-100Z
Light Source:	2 UV-A LED'S & 1 White LED	2 UV-A LED'S & 1 White LED
Lamp Style:	Corded lamp	Cordless lamp
Lamphead Diameter:	4.4 in (11.18 cm)	4.4 in (11.18 cm)
Length:	6.7 in (17 cm)	6.7 in (17 cm)
Width:	3.4 in (8.6 cm)	3.4 in (8.6 cm)
Height:	7.45 in (18.9 cm)	7.45 in (18.9 cm)
Weight:	1.76 Lb (0.8 Kg)	2.05 Lb (930 g) (with internal battery)
Power Requirements:	90 - 270 VAC, 50 TO 60 Hz	90 - 270 VAC, 50 TO 60 Hz
Run Time:	-	7 to 8 hours (continuous)
Charge Time:	-	2 hours

CLA-100 & CLA-100Z

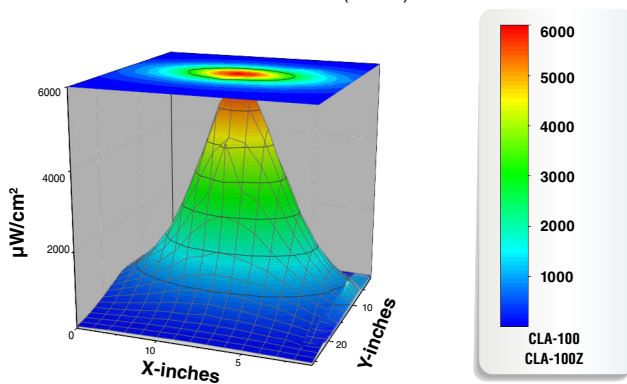
Classic Series Dual Function LED Inspection Lamp Kit

Comes complete with Classic Series Dual Function LED Inspection Lamp with lanyard, Smart Charger Power Supply (CLA-100Z only), AC Cord set, UV Absorbing Spectacles, Carrying Case For Spectacles, Protective Carrying Case.

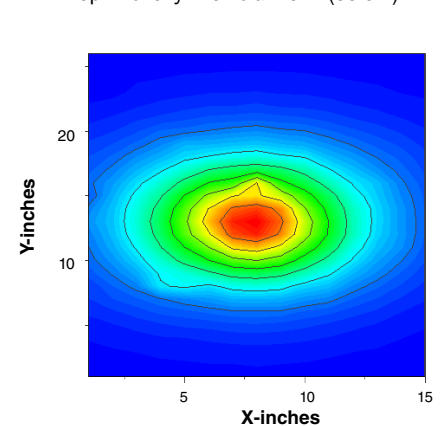


UV-A Beam Profiles

Surface Contour Profile at 15 in (38 cm)



Top Intensity Profile at 15 in (38 cm)



DISTRIBUE PAR / DISTRIBUTED BY:



QUEBEC

164, St-Jean-Baptiste
Mercier, QC J6R 2C2
450-691-9090
info@qnde.ca

ONTARIO

275, Sheldon Drive, Unit 3
Cambridge, ON N1T 1A3
519-884-9069
nadams@qnde.ca

ALBERTA

7307, 50 street NW
Edmonton, AB T6B 2J9
587-689-8811
ifields@qnde.ca

www.qnde.ca

1-800-361-3630

TESTED AND COMPLIES WITH



ASTM
E3022-18
Standard

SPECTROLINE®
NDT

CLASSIC SERIES

LED INSPECTION LAMP

CLA-150

- ▶ Nominal steady-state UV-A (365 nm) intensity of 8,000 $\mu\text{W}/\text{cm}^2$ at 15 in (38 cm)
- ▶ UV-A Coverage Area: 7 in (17.78 cm)



Dust Tight & Water Resistant



Fanless & Cool Running



Lightweight & Rugged



Instant-On Operation

ROCKER SWITCH

Easy on/off operation with rear Rocker switch

RUBBER BUMPER

Protects LED's from damage

LONG-LASTING UV-A LENSES

Equipped with UV-A Pass Filter

PISTOL GRIP

Comfortable, balanced control

ANODIZED ALUMINUM HOUSING

Minimizes corrosion and stands up to years of heavy use



CLASSIC SERIES CLA-150

MODEL	NOMINAL STEADY-STATE UV-A INTENSITY at 15 in (38 cm) ①	UV-A COVERAGE AREA at 15 in (38 cm) at minimum 1,200 µW/cm²
CLA-150	7,000 µW/cm²	7 in (17.78 cm)

① UV-A intensity reading taken with the Spectroline® AccuMAX™ Series meter, and is factory set to the value shown.

Light Source:	4 UV-A LED's
Lamp Style:	Handheld lamp
Lamphead Diameter:	4.4 in (11.18 cm)
Length:	6.7 in (17 cm)
Width:	3.4 in (8.6 cm)
Height:	7.45 in (18.9 cm)
Weight:	2.05 Lb (930 g)
Power Requirements:	90 - 270 VAC, 50 TO 60 Hz

CLA-150

Classic Series Dual Function LED Inspection Lamp Kit

Comes complete with Classic Series Dual Function LED Inspection Lamp with lanyard, Power Supply, AC Cord set, UV Absorbing Spectacles, Carrying Case For Spectacles, Protective Carrying Case.



UV-A Beam Profiles

