

TESTED TO COMPLY WITH



ASTM  
E3022-18  
Standard

SPECTROLINE®  
NDT

DISTRIBUE PAR / DISTRIBUTED BY:

QNDE  
QUALITY NDE LTD

QUEBEC

164, St-Jean-Baptiste  
Mercuri QC J6R 2C2  
450-691-0000  
info@qnnde.ca

ONTARIO

275, Sheldon Drive, Unit 3  
Cambridge, ON N1T 1A3  
519-884-3009  
nadama@qnnde.ca

ALBERTA

7307, 50 street NW  
Edmonton, AB T6B 2J9  
587-688-6811  
lfields@qnnde.ca

www.qnnde.ca 1-800-361-3630

# EagleEye™ 2

## UV-A/White Light LED Inspection Kit

EK-3000

- ▶ Nominal steady-state UV-A (365 nm) intensity of  $4,500 \mu\text{W}/\text{cm}^2$  at 15 in (38 cm)
- ▶ Low visible light emission - less than 2 foot-candle (<21.5 lux)



Dust Tight &  
Water Resistant



Lightweight  
& Rugged



Instant-On  
Operation

### HEAD STRAP

Option for hands free lamp operation



### LED LAMP

Lamp With UV-A & White LED's

### SPRAY CAN MOUNT

Attach lamp to ANY magnetic particle can for use with Magnetic Yoke



### TOGGLE SWITCH

Conveniently switch between UV-A & White Light

# EagleEye™ 2

MODEL	NOMINAL STEADY-STATE UV-A INTENSITY WITH FILTER at 15 in (38 cm) ①	UV-A COVERAGE AREA at 15 in (38 cm) at minimum 1,000 $\mu\text{W}/\text{cm}^2$	WHITE LIGHT INTENSITY	VISIBLE LIGHT MEASUREMENT
EE-365	4,500 $\mu\text{W}/\text{cm}^2$	5 in (12.7 cm)	> 50 foot-candle (> 538 Lux)	< 2 foot-candle (<21.5 lux)

① UV-A intensity reading taken with the Spectroline® NDT AccuMAX™ Series meter, and is factory set to the value shown.



<b>Light Source:</b>	2 UV-A LED'S & 3 White LED'S
<b>Lamp Style:</b>	Cordless Handheld Lamp
<b>Length:</b>	3.75 in (9.5 cm)
<b>Width:</b>	2.25 in (5.7 cm)
<b>Height:</b>	1.85 in (4.7 cm)
<b>Weight:</b>	8 Oz (227 g) with battery
<b>Run Time:</b>	75 minutes (continuous)
<b>Power Requirements:</b>	One 3.7V 2200mA/Hr Lithium-Ion Battery (rechargeable)

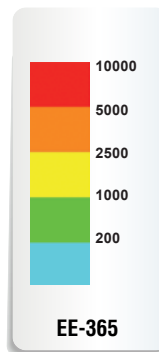
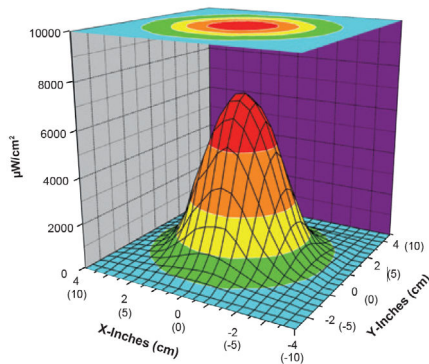
## EK-3000 EagleEye™ 2 Kit

Comes complete with EE-365 EagleEye™ 2 Lamp with head strap, Lamp mount/Sprayer, two splash guards with integral particulate filter, two rechargeable batteries, battery charging cradle with AC cord set, UV- absorbing spectacles, and soft carrying case.

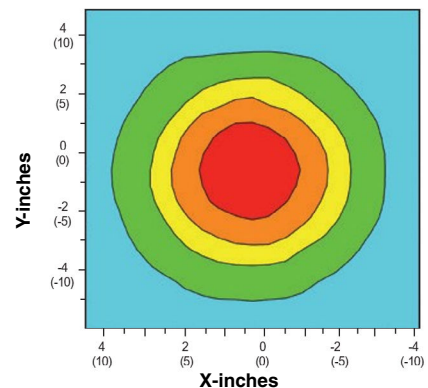


## UV-A Beam Profiles

Surface Contour Profile at 15 in (38 cm)



Top Intensity Profile at 15 in (38 cm)



DISTRIBUÉ PAR / DISTRIBUTED BY:



### QUEBEC

164, St-Jean-Baptiste  
Mercier, QC J6R 2C2  
450-691-9090  
info@qnnde.ca

### ONTARIO

275, Sheldon Drive, Unit 3  
Cambridge, ON N1T 1A3  
519-894-9069  
nadams@qnnde.ca

### ALBERTA

7307, 50 street NW  
Edmonton, AB T6B 2J9  
587-689-6811  
lfields@qnnde.ca



www.qnnde.ca

1-800-361-3630

NDT  
3/23 A9082022-2  
PRINTED IN USA