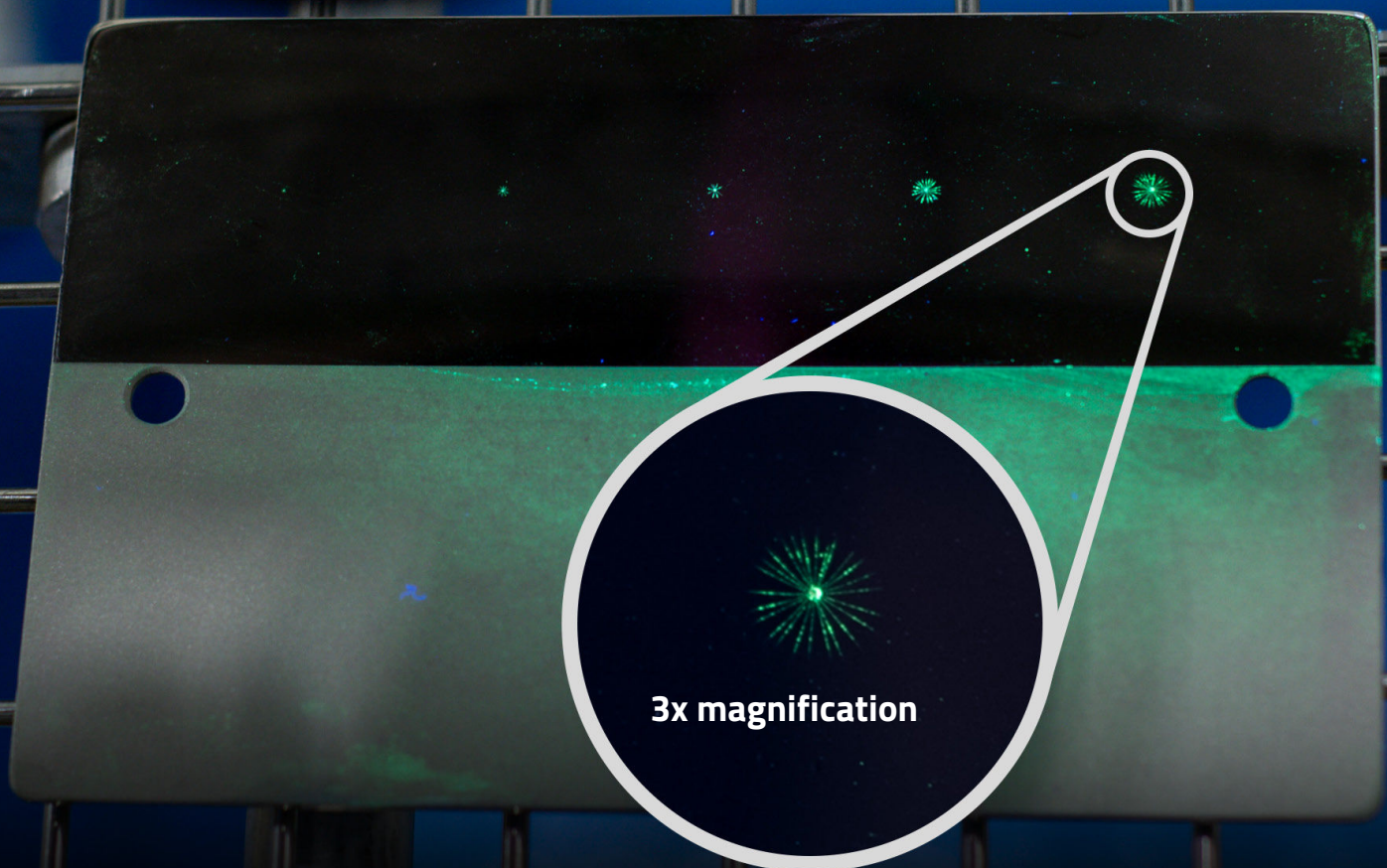


# REL TAM PANEL

PRATT & WHITNEY APPROVED TAM 146040-1



In Stock. Ready to Buy.



MADE IN  
THE USA

# HEXAVALENT CHROMIUM FREE

## Pratt & Whitney Approved TAM 146040-1 (Mirror Finish)

REL Designed Green 

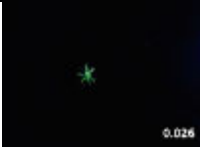


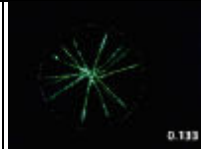
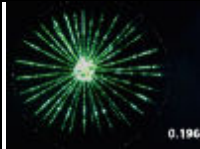
Compliances met by REL TAM Panel plating: RoHS, REACH, WEE, ELV, and Proposition 65.

Certification for GE Aviation Process Specification P3TF47

REL Certified 

REL, Inc. is an officially approved P&W Source Manufacturer. REL, Inc. certifies that the Fluorescent Penetrant Inspection REL TAM Panel meets the requirements as stated in TAM 146040-1, ASTM E1417, MIL-STD-6866, TO 33B-1-1, NAVAIR 01-1A-16-1, TM 1-1500-335-23, Rolls-Royce, and GE Aviation Process Specification P3TF47. The REL TAM Panel has been manufactured and tested in accordance with the REL, Inc. procedure RWI-1105.

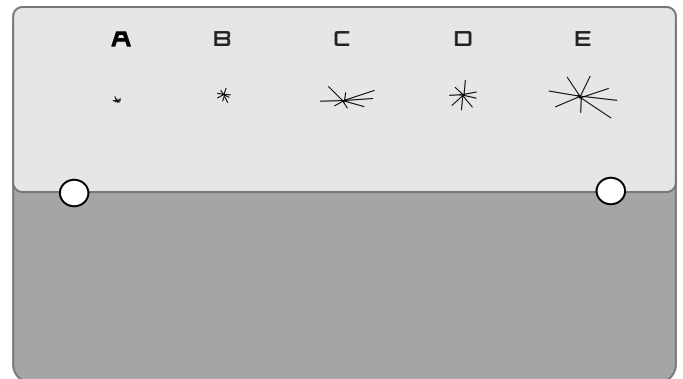
## PENETRANT SYSTEM MONITORING PANEL DOCUMENTATION

SN# 23120500					
Crack Position	A	B	C	D	E
Photo of Defect					
Magnification Factor: 1 : 5.5	0.026	0.060	0.092	0.133	0.196
Measured Size [Inch]	0.026	0.060	0.092	0.133	0.196
Specification [Inch]	0.015 - 0.031	0.046 - 0.062	0.075 - 0.093	0.125 - 0.171	0.180 - 0.250
Measured Size [mm]	0.66	1.52	2.34	3.38	4.98
Specification [mm]	0.38 - 0.79	1.17 - 1.57	1.91 - 2.36	3.18 - 4.34	4.57 - 6.35
Crack Depth	.0025" ± .0001"	63 µm ± 2.5µm			



REL TAM Panel - Single  
(Part Number: 250-00104)

REL TAM Panel - Twin  
(Part Number: 250-00103)



REL TAM Panel and Documentation included:

1. Case w/ panel certification,
2. Serialized crack size certification documents, and
3. Pictures of the manufactured defects (5 each).

DISTRIBUÉ PAR / DISTRIBUTED BY:

**QNDE**  
QUALITY NDE LTD

QUEBEC

164, St-Jean-Baptiste  
Mercier, QC J6R 2C2  
450-691-9090  
info@qn.de.ca

ONTARIO

275, Sheldon Drive, Unit 3  
Cambridge, ON N1T 1A3  
519-894-9069  
nadams@qn.de.ca

ALBERTA

7307, 50 street NW  
Edmonton, AB T6B 2J9  
587-689-6811  
lfields@qn.de.ca

www.qn.de.ca

1-800-361-3630