

Portable High Energy X-ray DDA for heavy duty inspections

DISTRIBUÉ PAR / DISTRIBUTED BY:



QUEBEC

164, St-Jean-Baptiste
Mercier, QC J6R 2C2
450-691-9090
info@qnnde.ca

ONTARIO

275, Sheldon Drive, Unit 3
Cambridge, ON N1T 1A3
519-894-9069
radiams@qnnde.ca

ALBERTA

7307, 50 street NW
Edmonton, AB T6B 2J9
587-689-6811
fields@qnnde.ca

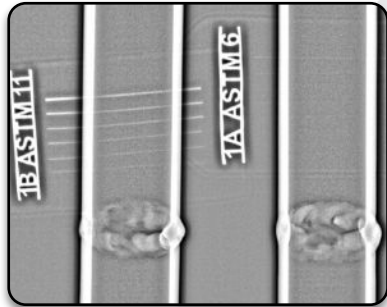
www.qnnde.ca

1-800-361-3630

APPLICATIONS

X-ray of high density materials and large thickness :

- Weldings
- Profile Radiography
- CUI (Corrosion Under Insulation)
- Castings
- Ammunitions
- Ballistic plates, ...



KEY FEATURES

Portable

Battery powered and wireless module.

Generate X-ray pictures anywhere : use the **Dereo HE** in a shielded cabinet and take it out at any time in order to work on the field.

High Energy

Electronics are sensitive to X-ray. **Dereo HE** is compatible with all existing sources (X-ray, gamma, betatrons, linear accelerators, ...) and all energies.

Robust

Tough handle, bumpers, military standard connectors, strong carrying case, ... will definitely grant a high level of robustness of your **Dereo HE** on the field. **IP67** certified.

Quick set-up

Very fast set-up and use thanks to smart hard- and software features.

Digital

Immediate image after couple of seconds.

Very user-friendly Maestro software.

Post-processing.

DICONDE Image format for universal file exchange.

Easy archiving & reporting.

Image quality

Automatic and fast averaging.

Pixel size from 200 down to 75 μm !

Highest sensitivity

Excellent signal to noise ratio ($\text{SNR} > 500$) thanks to smart calibration process and contrast resolution better than 1% (EN 462-1).

High penetration capability.

Dereo HE SPECIFICATION

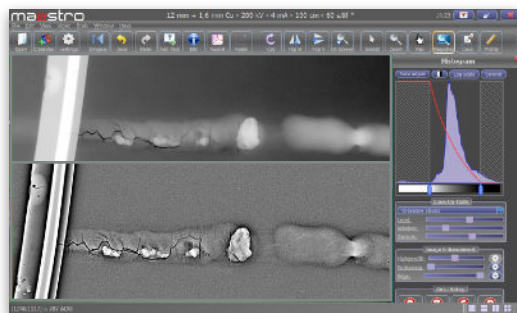


| MODEL | ACTIVE AREA (cm) | PIXEL SIZE (μm) | GREY LEVEL (bit) | EXTERNAL DIMENSIONS (mm) without bumpers | WEIGHT (kg) battery included | WIRELESS |
|----------------------|------------------|-----------------|------------------|--|------------------------------|----------|
| Dereo HE 1723 | 17 x 23 | 75 | 16 | 208 x 256 x 30 | 2.7 | Yes |
| Dereo HE 2329 | 23 x 29 | 75 | 16 | 322 x 355 x 17 | 3,4 | Yes |
| Dereo HE 2532 | 25 x 32 | 124 | 16 | 322 x 355 x 19 | 3.8 | Yes |
| Dereo HE 3643 | 36 x 43 | 140 | 16 | 400 x 470 x 19 | 5.9 | Yes |
| Dereo HE 4040 | 40 x 40 | 200 | 14 or 16 | 605 x 586 x 25 | 12.3 | Yes |

Unique : let us know your application and **X-RIS** will select the right scintillator for you.

Maestro SOFTWARE

- Software interfaces developed **by and with field users**
- **Maestro Touch** for touchpads and **Maestro** for laptops
- Very **intuitive** software interfaces. Access to all key tools of **Maestro Touch** with your thumbs and with one click mouse on **Maestro**
- Zoom in / out, screen adjustment, rotation, horizontal and vertical flip, cropping, ...
- Access to the LUT (look-up-table)
- Black and white reversal
- Annotations
- **ACUITY** Filter
- **Real time** magnifier
- **Real time** filters (Acuity, Defect, Contrast, Edge, Noise reduction, ...)
- Smart measurement tools
- NDT Tools for normative inspections
- Bad pixels map
- **DICONDE**
- Compliant with all major NDT standards (ISO 17636, ASTM-E 2698, E2736, E2737, E2597, Safran PR5250, Airbus AITM 6-7007 and Boeing BSS-7044)
- Wall thickness measurement
- Control of many X-ray generator brands and models
- Any language available upon request
- **X-RIS** is open to discuss the development of new software tools



Dereo HE ACCESSORIES

X-RIS makes your job easy and supplies :

- 40m cable reel (designed by **X-RIS** for minimization)
- Bipods and tripods
- Carrying case and backpack
- Touchpads and laptops
- **GemX** portable battery powered X-ray generators



www.xris.eu