

Global Leader in NDT



# 2015 Equipment Catalog

DISTRIBUÉ PAR / DISTRIBUTED BY:



QUEBEC  
164, St-Jean-Baptiste  
Mercier, QC J6R 2C2  
T : (450) 691-9090

ONTARIO  
275 Sheldon Drive, Unit 3  
Cambridge, ON N1T 1A3  
T : (519) 894-9069

[www.qnde.ca](http://www.qnde.ca)



# Table of Contents

|    |   |
|----|---|
| 1  | MPI Equipment                           |
| 1  | Choosing MPI Equipment                  |
| 3  | Wet Horizontal Units                    |
| 11 | MPI Inspection Hoods                    |
| 12 | Mobile Power Packs                      |
| 14 | Portable Power Packs                    |
| 15 | Stationary Power Packs                  |
| 20 | Demagnetization Units                   |
| 22 | MPI Accessories and Materials           |
| 26 | LPI Equipment                           |
| 43 | Build Your Own System                   |
| 47 | LPI Accessories and Materials           |
| 53 | Black Light and Black Light Accessories |

# Magnetic Particle Inspection Equipment

DISTRIBUÉ PAR / DISTRIBUTED BY:



QUEBEC

164, St-Jean-Baptiste  
Mercier, QC J6R 2C2  
T : (450) 691-9090

ONTARIO

275 Sheldon Drive, Unit 3  
Cambridge, ON N1T 1A3  
T : (519) 894-9069

[www.qnde.ca](http://www.qnde.ca)

## INTRODUCTION

Whether you're testing a small bolt, a large turbine rotor, or anything in between, Magnaflux offers a complete selection of high-quality magnetic particle inspection (MPI) equipment for every application. Value-engineered and manufactured to meet government and industry specifications, Magnaflux MPI equipment provides many advantages:

- Simple, fast, reliable operation Versatility to locate both surface and near-surface defects
- Economical operation for high-volume inspection rates
- Durability for industrial environments Little or no size limitations of parts being tested
- No elaborate pre-cleaning of parts is required

For optimum inspection performance, Magnaflux produces and supplies a complete line of materials and accessories. Because we offer a full line of equipment, accessories, and materials, we can easily serve you the customer, and work to satisfy all of your inspection needs.

## CHOOSING THE RIGHT EQUIPMENT

Magnaflux wants you to buy the best piece of equipment to suit your needs. If at any time you need assistance or clarification, feel free to contact the Magnaflux Equipment Group. The equipment group can be reached through our Customer Service Department at 847-657-5300, or via e-mail at CS@magnaflux.com. Listed below are several issues you will need to address as you review this catalog.

### 1) TYPE OF DEFECT

A. Surface—if the only defect is open to the surface, Alternating Current (AC) units offer the best, least expensive solution. But on larger parts where more power is needed, a Direct Current (DC) of some form may be a viable solution.

B. Sub-Surface—In order to locate defects close to the surface or below the surface, Direct Current (DC) is the best choice. Magnaflux offers units with Half Wave DC, One Phase FWDC, and Three Phase FWDC outputs.

### 2) PART LENGTH

A. Main line Magnaflux units will accept parts up to 146 inches (371 cm)

B. Magnaflux custom equipment has handled parts 30 feet long and longer. We work hard to fit your need.

### 3) PROCESSING RATE

A. Low processing rates (Approximately one part every 30 seconds) can be processed on our "conventional" equipment. Conventional machines normally require two magnetizing shots with a separate inspection after each shot.

B. High processing rates can be handled by Multi-directional units. These units offer one shot one inspection on many parts, cutting process time in half. They also have higher levels of technology built in allowing interfaces with automated equipment.

### 4) MAGNETIZING FIELD STRENGTH

A. Field Strength depends on part size, geometry, and material. Location and type of defect are also factors to determine how much field you will need. Magnaflux units can create 20–20,000 amps of magnetizing current.

B. Magnaflux application engineers can help you determine how much magnetic power you will need for a proper inspection. Contact the equipment group through our customer service.

### 5) CUSTOMER REQUIREMENTS

On occasion, additional customer requirements may help determine the best unit. Quite often specifications are written to require inspections be done in certain ways. These specifications may require AC when surface flaws are the only predicted flaw. If you need help to interpret a specification, feel free to contact us. We have a library for our use containing many of the industry standards.

## ANCILLARY EQUIPMENT

Magnaflux offers many standard units to help you process your parts. Inspection Hoods, Conveyor Systems, Demagnetizing Units, and Induced Current Fixtures are a few of the items we offer. These items have proven themselves as products of durability and reliability.

# TYPES OF MAGNAFLUX EQUIPMENT

## WET HORIZONTAL UNITS

Magnaflux A, D and MD-Series wet bench equipment offers the flexibility of current type and part range capabilities to identify surface and sub-surface defects across a broad range of parts by providing the specific unit best suited to your needs.

## MOBILE POWER PACKS

The Magnaflux M-Series Mobile Power Pack facilitates testing of large and abnormally heavy parts.

The Magnaflux M-Series Mobile Power Pack solves the problem of magnetizing parts too large or heavy to be processed by standard fixed position MPI equipment.

Ruggedly built, the adaptive M-Series will locate parts in any direction using prods, central conductors, or coils.

## PORTABLE POWER PACK

Magnaflux P-Series Portable Power Pack offers a convenient solution to in-field testing.

Performing mag particle inspection of in-field parts or large, heavy parts that require only moderate power for magnetization can be conveniently inspected with the Magnaflux P-Series Portable Power Pack.

## STATIONARY POWER PACKS

Parts requiring special handling can count on Magnaflux C-Series Stationary Power Packs for MPI processing.

Magnaflux CD, CMD, and CSV-Series stationary power packs help facilitate testing of large and heavy parts or parts that cannot be accommodated by traditional MPI units.

Providing high magnetizing current with minimal power requirement the C-Series offers expanded MPI capabilities on a low-cost operating platform.

## DEMAGNETIZATION EQUIPMENT

Magnaflux demagnetization units remove any residual magnetism remaining after Magnaglo® and Magnavis® Magnetic Particle Inspection testing.

Compact in size and ruggedly built, Magnaflux S and SB-Series demagnetization equipment offers a fast, efficient method for demagnetizing a broad variety of part types and sizes following the magnetic particle inspection process.



## Wet Horizontal Units : A-Series

The Magnaflux A-2030, AD-2045, and ADH-2045 are our most economical standard wet bench units. They offer great particle mobility for finding surface and sub-surface defects, and the versatility of using AC or DC magnetization (except A-2030). The two outputs are independently adjustable to set each magnetic field, circular or longitudinal. Magnetization shot time is adjustable, allowing better development of indications.

---

### BENEFITS

- Versatility of using AC (surface defects) or DC (sub-surface defects)
- Shot time can be adjusted to meet different inspection requirements or needs
- Footswitch to free-up hands for inspection
- Long lasting stainless steel tank
- Economical

## A-2030

### STANDARD FEATURES

#### Exterior:

- Innovative pump system for fluid delivery, agitation with easy maintenance access
- Push bar design for easy activation
- Current assurance indicator for magnetic current flow
- Large, easy to read Digital Ammeter
- Independent Contact and Coil Current Controls
- 12 inch (30 cm) diameter coil
- Footswitch-activated pneumatic headstock
- Adjustable tailstock with crank
- Stainless steel tank
- Front and rear maple hardwood grilles

#### Interior:

Microprocessor control, advanced technology reduce components and increase reliability

Solid state circuitry

Liquid Resistant panels, allow ventilation while inhibiting fluid intrusion

### SPECIFICATIONS

- 3000 amp AC magnetizing current capability at contacts
- Demag—One Touch decaying AC
- Duty Cycle 0.5 seconds on, 10 Seconds off (5% with Maximum of 5 seconds)
- 54 inch (137 cm) headstock/tailstock capacity
- Infinitely variable current control
- Available Voltages: 230, 380, 415, 460, 575, 50 or 60 hertz, single phase power
- Recommended 20 Gallon (75 Liter) Tank Fluid Capacity
- Minimum 40 PSI with 5 CFM capability
- 89" (224 cm) x 41" (104 cm) Foot Print, allow 24" (61 cm) per side for ventilation

### OPTIONAL FEATURES

- 16" coil (41 cm) w/raising block up-grade (In lieu of 12" coil)
- Rotating Contacts (70 lb. part capacity; N/A w/12" coil)
- NRTL Certification to CSA C22.2 No. 61010-1
- Dual Palm Button
- Configure Unit for 102" Part
  - Recommended 32 Gallon (122 Liter) Tank Fluid Capacity
  - 136" (346 cm) x 41" (104 cm) Foot Print, allow 24" (61 cm) per side for ventilation

## AD-2045

### STANDARD FEATURES

#### Exterior:

- Innovative pump system for fluid delivery, agitation with easy maintenance access
- Push bar design for easy activation
- Current assurance indicator for magnetic current flow
- Large, easy to read Digital Ammeter
- Independent Contact and Coil Current Controls
- 12 inch (30 cm) diameter coil
- Footswitch-activated pneumatic headstock
- Adjustable tailstock with crank
- Stainless steel tank
- Front and rear maple hardwood grilles

#### Interior:

- Microprocessor control, advanced technology reduce components and increase reliability
- Solid state circuitry
- Liquid Resistant panels, allow ventilation while inhibiting fluid intrusion

### SPECIFICATIONS

- 4000 amp AC/5000 amp FWDC magnetizing current capability at contacts
- Demag—One Touch decaying AC
- Duty Cycle 0.5 seconds on, 10 Seconds off (5% with Maximum of 5 seconds)
- 54 inch (137 cm) headstock/tailstock capacity
- Infinitely variable current control
- Available Voltages: 230, 380, 415, 460, 575, 50 or 60 hertz, single phase power
- Recommended 20 Gallon (75 Liter) Tank Fluid Capacity
- Minimum 40 PSI with 5 CFM capability
- 89" (224 cm) x 41" (104 cm) Foot Print, allow 24" (61 cm) per side for ventilation

### OPTIONAL FEATURES

- 16" coil (41 cm) w/raising block up-grade (In lieu of 12" coil)
- 20" coil (51 cm) w/raising block up-grade (In lieu of 12" coil)
- 19.7" inch (50 cm) clam-shell coil (3-turn) w/raising block up-grade (In lieu of 12" coil)
- Reinforced Rail for heavier part load (4,000 lbs. part capacity)
- Oversized Contact assembly (12"x 12") for headstock & tailstock
- Rotating Contacts (70 lb. part capacity; N/A w/12" coil)
- NRTL Certification to CSA C22.2 No. 61010-1
- Dual Palm Button
- Configure Unit for 102" Part
  - Recommended 32 Gallon (122 Liter) Tank Fluid Capacity
  - 136" (346 cm) x 41" (104 cm) Foot Print, allow 24" (61 cm) per side for ventilation
- Configure Unit for 146" Part
  - Recommended 55 Gallon (209 Liter) Tank Fluid Capacity
  - 180" (458 cm) x 41" (104 cm) Foot Print, allow 24" (61 cm) per side for ventilation

# ADH-2045

## STANDARD FEATURES

### Exterior:

- Innovative pump system for fluid delivery, agitation with easy maintenance access
- Push bar design for easy activation
- Current assurance indicator for magnetic current flow
- Large, easy to read Digital Ammeter
- Independent Contact and Coil Current Controls
- 12 inch (30 cm) diameter coil
- Footswitch-activated pneumatic headstock
- Adjustable tailstock with crank
- Stainless steel tank
- Front and rear maple hardwood grilles

### Interior:

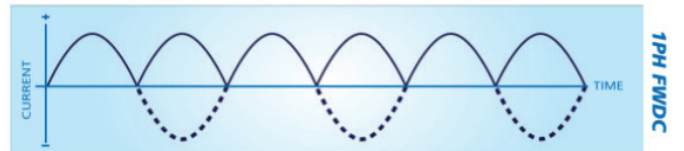
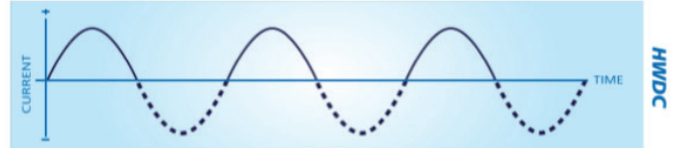
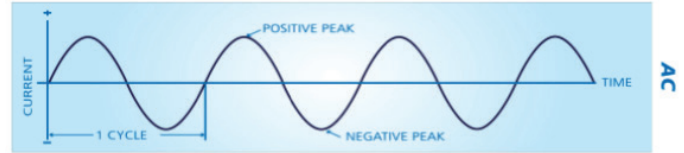
- Microprocessor control, advanced technology reduce components and increase reliability
- Solid state circuitry
- Liquid Resistant panels, allow ventilation while inhibiting fluid intrusion

## SPECIFICATIONS

- 4000 amp AC/5000 amp HWDC magnetizing current capability at contacts
- Demag—One Touch decaying AC
- Duty Cycle 0.5 seconds on, 10 Seconds off (5% with Maximum of 5 seconds)
- 54 inch (137 cm) headstock/tailstock capacity
- Infinitely variable current control
- Available Voltages: 230, 380, 415, 460, 575, 50 or 60 hertz, single phase power
- Recommended 20 Gallon (75 Liter) Tank Fluid Capacity
- Minimum 40 PSI with 5 CFM capability
- 89" (224 cm) x 41" (104 cm) Foot Print, allow 24"(61 cm) per side for ventilation

## OPTIONAL FEATURES

- 16" coil (41 cm) w/raising block up-grade (In lieu of 12" coil)
- 20" coil (51 cm) w/raising block up-grade (In lieu of 12" coil)
- 19.7" inch (50 cm) clam-shell coil (3-turn) w/raising block up-grade (In lieu of 12" coil)
- Reinforced Rail for heavier part load (4,000 lbs. part capacity)
- Oversized Contact assembly (12"x 12") for headstock & tailstock
- Rotating Contacts (70 lb. part capacity; N/A w/12" coil)
- NRTL Certification to CSA C22.2 No. 61010-1
- Dual Palm Button
- Configure Unit for 102" Part
  - Recommended 32 Gallon (122 Liter) Tank Fluid Capacity
  - 136" (346 cm) x 41" (104 cm) Foot Print, allow 24" (61cm) per side for ventilation
- Configure Unit for 146" Part"
  - Recommended 55 Gallon (209 Liter) Tank Fluid Capacity
  - 180" (458 cm) x 41" (104 cm) Foot Print, allow 24" (61 cm) per side for ventilation





## Wet Horizontal Units : D-Series

The Magnaflux D Series (3 Phase Unit) are our most powerful standard wet bench units. They offer maximum magnetization for finding surface and sub-surface defects while using minimal power. The two outputs are independently adjustable to set each magnetic field, circular or longitudinal.

### BENEFITS

- High output for inspection of large parts
- Ability to locate sub-surface defects using DC
- Shot time can be adjusted to meet different inspection requirements or needs
- Footswitch to free-up hands for inspection
- Long lasting stainless steel tank



## D-2060 STANDARD FEATURES

### Exterior:

- Innovative pump system for fluid delivery, agitation with easy maintenance access
- Push bar design for easy activation
- Current assurance indicator for magnetic current flow
- Large, easy to read Digital Ammeter
- Independent Contact and Coil Current Controls
- 12 inch (30 cm) diameter coil
- Footswitch- activated pneumatic headstock
- Adjustable tailstock with crank
- Stainless steel tank
- Front and rear maple hardwood grilles

### Interior:

- Microprocessor control, advanced technology reduce components and increase reliability
- Quick break on Coil Circuit
- RS-232 port for computer interface
- Solid state circuitry
- Liquid Resistant panels, allow ventilation while inhibiting fluid intrusion

## SPECIFICATIONS

- 6000 amp 3Phase FWDC magnetizing current capability at contacts
- Ultra Low Frequency reversing DC Demagnetization
- Duty Cycle 0.5 seconds on, 10 Seconds off (5% with Maximum of 5 seconds)
- 54 inch (137 cm) headstock/tailstock capacity
- Infinitely variable current control
- Available Voltages: 230, 380, 415, 460, 575, 50 or 60 hertz, 3 phase power
- Recommended 20 Gallon (75 Liter) Tank Fluid Capacity
- Minimum 40 PSI with 5 CFM capability
- 89" (224 cm) x 41" (104 cm) Foot Print, allow 24"(61 cm) per side for ventilation

## OPTIONAL FEATURES

- Coil of 16" ID with raising blocks (in lieu of the 12" ID coil)
- Coil of 20" ID with raising blocks (in lieu of the 12" ID coil)
- Coil of 25" ID with raising blocks (in lieu of the 12" ID coil)
- 30" Coil (in lieu of 12" Coil)
- 36" Coil (in lieu of 12" Coil)
- 19.7" inch (50 cm) clam-shell coil (3-turn) w/raising block up-grade (In lieu of 12" coil)
- Reinforced Rail for heavier part load (4,000 lbs. part capacity)
- Oversized Contact assembly (12"x 12") for headstock & tailstock
- Rotating Contacts (70 lb. part capacity; N/A w/12" coil)
- MOD 2.5 AC magnetization/demagnetization 2,500 Amps of AC current
- MOD 6.0 magnetization/demagnetization 6,000 amps of AC current
- NRTL Certification to CSA C22.2 No. 61010-1
- Dual Palm Button
- Configure Unit for 102" Part
  - Recommended 32 Gallon (122 Liter) Tank Fluid Capacity
  - 136" (346 cm) x 41" (104 cm) Foot Print, allow 24" (61 cm) per side for ventilation
- Configure Unit for 146" Part
  - Recommended 55 Gallon (209 Liter) Tank Fluid Capacity
  - 180" (458 cm) x 41" (104 cm) Foot Print, allow 24" (61 cm) per side for ventilation

## D-2100 STANDARD FEATURES

### Exterior:

- Innovative pump system for fluid delivery, agitation with easy maintenance access
- Push bar design for easy activation
- Current assurance indicator for magnetic current flow
- Large, easy to read Digital Ammeter
- Independent Contact and Coil Current Controls
- 16 inch (41 cm) diameter coil
- Footswitch-activates pneumatic headstock
- Adjustable tailstock with crank
- Stainless steel tank
- Oversized Contact assembly (12"x 12") for headstock & tailstock
- Front and rear maple hardwood grilles

### Interior:

- Microprocessor control, advanced technology reduce components and increase reliability
- RS-232 port for computer interface
- Solid state circuitry
- Quick break on coil circuit
- Liquid Resistant panels, allow ventilation while inhibiting fluid intrusion

## SPECIFICATIONS

- 10,000 amp Three (3) Phase Rectified to FWDC magnetizing current capability at contacts
- Ultra Low Frequency reversing DC Demagnetization
- Duty Cycle 0.5 seconds on, 20 Seconds off (Maximum of 5 seconds)
- 51 inch (130 cm) headstock/tailstock capacity
- Reinforced Rail for heavier part load (4,000lbs. part capacity)
- Infinitely variable current control
- Available Voltages: 230, 380, 415, 460, 575, 50 or 60 hertz, 3 phase power
- Recommended 20 Gallon (75 Liter) Tank Fluid Capacity
- Minimum 40 PSI with 5 CFM capability
- 89" (224 cm) x 41" (104 cm) Foot Print, allow 24"(61 cm) per side for ventilation

## OPTIONAL FEATURES

- Coil of 20" ID (in lieu of the 16" ID coil)
- Coil of 25" ID with raising blocks (in lieu of the 16" ID coil)
- 30" Coil (in lieu of 16" coil)
- 36" Coil (in lieu of 16" coil)
- 19.7" inch (50 cm) clam-shell coil (3-turn) (In lieu of 16" coil)
- MOD 4 AC magnetization/demagnetization 4,000 Amps of AC current
- MOD 6.0 magnetization/demagnetization 6,000 amps of AC current
- NRTL Certification to CSA C22.2 No. 61010-1
- Dual Palm Button
- Configure Unit for 102" Part
  - Recommended 32 Gallon (122 Liter) Tank Fluid Capacity
  - 136" (346 cm) x 41" (104 cm) Foot Print, allow 24" (61 cm) per side for ventilation
- Configure Unit for 146" Part
  - Recommended 55 Gallon (209 Liter) Tank Fluid Capacity
  - 180" (458 cm) x 41" (104 cm) Foot Print, allow 24" (61 cm) per side for ventilation



*MD3-2060 with Auto-Bath*

## Wet Horizontal Units : MD-Series

The Magnaflux Multi-Directional units are our most versatile standard units. The MD Series offers time saving multidirectional magnetization for finding defects in all orientations with one cycle. The two or three outputs are independently adjustable to balance the magnetic field intensity, and each output offers AC, HWDC or One Phase FWDC output.

The user can mix and match current types while adjusting current levels creating virtually infinite combinations for the operator. These combinations allow the machine to be used with a wide range of parts, while the Customer Programmable Settings insure repeatability whether you process the same part every day or once a year. Supervisor Locks keeps stored settings safe from inadvertent variation.

---

### BENEFITS

- Versatility
- Single shot saves time and labor
- Independent adjustability to balance the field intensity
- Supervisor security lock to ensure repeatability of process inspection

## MD-2030

### STANDARD FEATURES

#### Exterior:

- Innovative pump system for fluid delivery, agitation with easymaintenance access
- Push bar design for easy activation
- Visual/audible current assurance alarms with alarm log
- Two Large, easy to read Digital Ammeter Displays
- Two independent variable current controls with keypad entry
- Independent Contact, Flux Flow Current Type Selection
- Daily Reminder Alarms for UV Light, White Light, & Bath Concentration
- 50 customer programmable recipes
- Color Touch Screen Interface
- Automatic piece parts counter
- Footswitch-activated pneumatic headstock
- Adjustable tailstock with crank
- Stainless steel tank
- Front and rear maple hardwood grilles

#### Interior:

- PLC control, advanced technology reduce components and increase reliability
- Modular digital solid state circuitry
- Quick disconnect wiring
- Liquid Resistant panels, allow ventilation while inhibiting fluid intrusion

#### SPECIFICATIONS:

- 3000 amp FWDC/HWDC or 2500 amp AC multidirectional output; current capability at contacts
- Multidirectional power supply-two outputs (Contacts, Flux-Flow coils)
- Rapid Reversing FWDC or decaying AC Demagnetization
- Duty Cycle 0.5 seconds on, 10 Seconds off (5% with Maximum of 5 seconds)
- 41 inch (104 cm) headstock/tailstock capacity
- Recommended 20 Gallon (75 Liter) Tank Fluid Capacity
- Available Voltages: 230, 380, 415, 460, 575, 50 or 60 hertz, 3 phase power
- Minimum 40 PSI with 5 CFM capability
- 89" (226cm) x 41" (104 cm) Foot Print, allow 24"(61 cm) per side for ventilation

#### OPTIONAL FEATURES:

- 16" Coil in lieu of the Flux Coils
- Dual Palm Button
- Automatic bath
  - Engage/Disengage switch
  - Adjustable Stroke Length, up to 22 inches
  - Automatic Mag Shot when Bath Returns Automatic Bath Shut Off, no flow when bath in retracted position
  - Articulating Spray Nozzles

## MD-2060

### STANDARD FEATURES

#### Exterior:

- Innovative pump system for fluid delivery, agitation with easymaintenance access
- Push bar design for easy activation
- Visual/audible current assurance alarms with alarm log
- Two Large, easy to read Digital Ammeter Displays
- Two independent variable current controls with keypad entry
- Independent Contact and Flux Flow Current Type Selection
- Daily Reminder Alarms for UV Light, White Light, & Bath Concentration
- 50 customer programmable recipes
- Color Touch Screen Interface
- Automatic piece parts counter
- Footswitch-activated pneumatic headstock
- Adjustable tailstock with crank
- Stainless steel tank
- Front and rear maple hardwood grilles

#### Interior:

- PLC control, advanced technology reduce components and increase reliability
- Modular digital solid state circuitry
- Quick disconnect wiring
- Liquid Resistant panels, allow ventilation while inhibiting fluid intrusion

#### SPECIFICATIONS:

- 6000 amp FWDC/HWDC or 5000 amp AC multidirectional output; current capability at contacts
- Multidirectional power supply-two outputs (Contacts, Flux-Flow coils)
- Rapid Reversing FWDC or decaying AC Demagnetization
- Duty Cycle 0.5 seconds on, 10 Seconds off (5% with Maximum of 5 seconds)
- 41 inch (104 cm) headstock/tailstock capacity
- Recommended 20 Gallon (75 Liter) Tank Fluid Capacity
- Available Voltages: 380, 415, 460, 575, 50 or 60 hertz, 3 phase power
- Minimum 40 PSI with 5 CFM capability
- 89" (226 cm) x 41" (104 cm) Foot Print, allow 24" (61 cm) per side for ventilation

#### OPTIONAL FEATURES:

- 16" Coil in lieu of the Flux Coils
- Dual Palm Button
- Automatic bath
  - Engage/Disengage switch
  - Adjustable Stroke Length, up to 22 inches
  - Automatic Mag Shot when Bath Returns
  - Automatic Bath Shut Off, no flow when bath in retracted position
  - Articulating Spray Nozzles
- Configure Unit for 89" Part Capacity
  - Recommended 37 Gallon (140 L) Tank Fluid Capacity
  - 136" (346 cm) x 41" (104 cm) Foot Print, allow 24" (61 cm) per side for ventilation

# MD3-2060

## STANDARD FEATURES

### Exterior:

- Innovative pump system for fluid delivery, agitation with easy maintenance access
- Push bar design for easy activation
- Visual/audible current assurance alarms with alarm log
- Three Large, easy to read Digital Ammeter Displays
- Three independent variable current controls with keypad entry
- Independent Contact, Flux Flow, and Aux Coil Current Type Selection
- Daily Reminder Alarms for UV Light, White Light, & Bath Concentration
- 50 customer programmable recipes
- Color Touch Screen Interface
- Automatic piece parts counter
- 16 inch (41 cm) diameter auxiliary coil
- Footswitch-activated pneumatic headstock
- Adjustable tailstock with crank
- Stainless steel tank
- Front and rear maple hardwood grilles

### Interior:

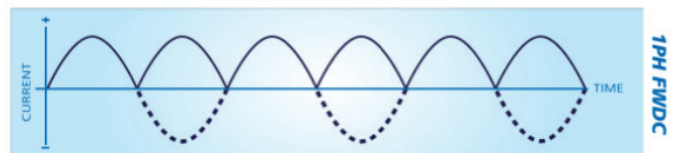
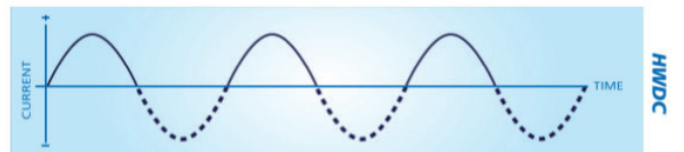
- PLC control, advanced technology reduce components and increase reliability
- Modular digital solid state circuitry
- Quick disconnect wiring
- Liquid Resistant panels, allow ventilation while inhibiting fluid intrusion

## SPECIFICATIONS:

- 6000 amp FWDC/HWDC or 5000 amp AC multidirectional output; current capability at contacts
- Multidirectional power supply - three outputs (Contacts, Flux-Flow coils, & Aux Coil)
- Rapid Reversing FWDC or decaying AC Demagnetization
- Duty Cycle 0.5 seconds on, 10 Seconds off (5% with Maximum of 5 seconds)
- 41 inch (104 cm) headstock/tailstock capacity
- Recommended 20 Gallon (75 Liter) Tank Fluid Capacity
- Available Voltages: 380, 415, 460, 575, 50 or 60 hertz, 3 phase power
- Minimum 40 PSI with 5 CFM capability
- 89" (226 cm) x 41" (104 cm) Foot Print, allow 24" (61 cm) per side for ventilation

## OPTIONAL FEATURES

- 20 inch (51cm) Coil in lieu of the 16" Coil
- 19.7 inch (50 cm) clam-shell coil (3-turn) w/ raising block up-grade (In lieu of 16" coil)
- Dual Palm Button
- Automatic bath
  - Engage/Disengage switch
  - Adjustable Stroke Length, up to 22 inches
  - Automatic Mag Shot when Bath Returns
  - Automatic Bath Shut Off, no flow when bath in retracted position
  - Articulating Spray Nozzles
- Configure Unit for 89" Part
  - Recommended 32 Gallon (122 Liter) Tank Fluid Capacity
  - 136" (346 cm) x 41" (104 cm) Foot Print, allow 24"(61 cm) per side for ventilation
- Configure Unit for 133" Part
  - Recommended 55 Gallon (209 Liter) Tank Fluid Capacity
  - 180" (458 cm) x 41" (104 cm) Foot Print, allow 24"(61 cm) per side for ventilation





## Inspection Hoods : GE-Series

Magnaflux has worked hard to create a very functional inspection environment while keeping operator comfort and convenience in mind. Our durable curtains darken the inspection area to levels well below the common standards. The easy access to the unit is improved by the front "theater style" curtain mechanism. This same front curtain can be folded in half and hung to allow better ventilation in warmer environments.

### FEATURES

#### GE-54 CONFIGURED FOR STANDARD PART CAPACITY

- ZB-100F Black Light
- Quick Mount Design
- Easy Access through Front Curtain (Theater Style)
- Adjustable Length Curtain
- White Light and Ventilation Fan
- Flame Resistant Curtains
- White Light Control from Operator Interface
- Fan On/Off Switch on Operator Interface
- Foot Print;
  - Closed 89" x 63" x 90"

#### GE-96 CONFIGURED FOR LONG PART CAPACITY

- Open 89" x 41" x 122"
- Foot Print;
  - Closed 136" x 63" x 90"
  - Open 136" x 41" x 122"

#### GE-144 CONFIGURED FOR EXTRA LONG CAPACITY

- Foot Print;
  - Closed 180" x 63" x 90"
  - Open 180" x 41" x 122"



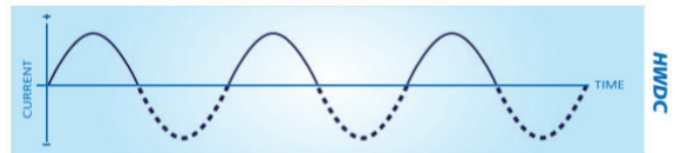
## Mobile Power Packs : M-Series

Magnaflux understands some parts cannot be moved so the magnetizing station needs to be brought to the part. The M Series offers a solution by providing an adaptable mobile unit. These units feature AC or Half Wave DC output. Output rating is based on Load Specified.

Note: M-2030 for long cable output is designed for applications in which the power source cannot be close to the inspection piece. This unit designed to work with long cable lengths necessary for inspecting large parts (i.e. power generator parts).

### BENEFITS

- Ability to easily move the unit to the part for inspection
- Convenient hook on back side of unit to wrap cables after use, saves space as well as keeps cables lasting longer without being dragged along the floor when moved.



## M-2040

### STANDARD FEATURES

#### Exterior:

- Digital Meter Display
- Two Bus Bars for Connection
- Push button Switch for AC output
- Push button Switch for HWDC output
- Push button Switch for Mag
  - Momentary – magnetizes as long as button is pushed
- Push button Switch for Demag
  - One touch auto cycle
  - Switches to decaying AC automatically
- Push button Switch for power on/off
- Push button Switch for pulse
  - ½ sec on, 3 sec off for 30 sec
- Infinitely variable current control
- Two (2) fixed heavy-duty casters
- Two (2) swivel casters with locks
- Lift brackets for extra unit mobility
- 115 Volt Convenience Outlet (10 amp)

#### Internal:

- Thermal Overload for circuitry protection
- PLC Circuitry for extra reliability
- Secondary Current Control
- Flow through cooling for heat dissipation
- Solid State Switching (AC to HWDC)

### SPECIFICATIONS

- Output: 4000 amps AC and HWDC magnetizing current
- Output rated with 30' total 4/0 Cable
- Dimensions: 46" L x 23" W x 39" H Weight: 750 lbs.
- Available Voltages: 230, 380, 415, 460, 575, 50 or 60 hertz, single phase power
- 8% Duty Cycle (maximum output with 1/2 minute ON time)

## M-2030

### STANDARD FEATURES

#### Exterior:

- Digital Meter Display
- Two Bus Bars for Connection
- Push button Switch for AC output
- Push button Switch for HWDC output
- Push button Switch for Mag
  - Momentary—magnetizes as long as button is pushed
- Push button Switch for Demag
  - One touch auto cycle
  - Switches to decaying AC automatically
- Push button Switch for power on/off
- Push button Switch for pulse
  - ½ sec on, 3 sec off for 30 sec
- Infinitely variable current control
- Two (2) fixed heavy-duty casters
- Two (2) swivel casters with locks
- Lift brackets for extra unit mobility
- 115 Volt Convenience Outlet (10 amp)

## M-2060

### STANDARD FEATURES

#### Exterior:

- Digital Meter Display
- Two Bus Bars for Connection
- Push button Switch for AC output
- Push button Switch for HWDC output
- Push button Switch for Mag
  - Momentary – magnetizes as long as button is pushed
- Push button Switch for Demag
  - One touch auto cycle
  - Switches to decaying AC automatically
- Push button Switch for power on/off
- Push button Switch for pulse
  - ½ sec on, 3 sec off for 30 sec
- Infinitely variable current control
- Two (2) fixed heavy-duty casters
- Two (2) swivel casters with locks
- Lift brackets for extra unit mobility
- 115 Volt Convenience Outlet (10 amp)

#### Internal:

- Thermal Overload for circuitry protection
- PLC Circuitry for extra reliability
- Secondary Current Control
- Flow through cooling for heat dissipation
- Solid State Switching (AC to HWDC)

### SPECIFICATIONS

- Output: 6000 amps AC and HWDC magnetizing current
- Output rated with two 30' of 4/0 cables ran in parallel
- Dimensions: 46" L x 23" W x 39" H
- Weight: 780 lbs.
- Available Voltages: 380, 415, 460, 575, 50 or 60 hertz, single phase power
- 7% Duty Cycle (maximum output with 1/2 minute ON time)

#### Internal:

- Thermal Overload for circuitry protection
- PLC Circuitry for extra reliability
- Secondary Current Control
- Flow through cooling for heat dissipation
- Solid State Switching (AC to HWDC)

### SPECIFICATIONS

- Output: 3000 amps AC and HWDC magnetizing current
- Output rated with 90' of 4/0 cables
- Dimensions: 46" L x 23" W x 39" H Weight: 780 lbs.
- Available Voltages: 380, 415, 460, 575, 50 or 60 hertz, single phase power
- 7% Duty Cycle (maximum output with 1/2 minute ON time)



P-70

## Portable Power Packs : P-Series

Portable Power Packs are convenient and economical inspection units that are used in a wide range of magnetic particle applications that require only moderate power. The Magnaflux Portable Power Packs are ideal for large or heavy parts, in-service mobile equipment, or job-site welds.

### STANDARD FEATURES

- Find surface defects with AC current; switch cable connection to half wave DC (HWDC) for near-surface flaws
- Locate defects in any direction using prods, central conductor, coil (wrap part with 3-5 turns of cable)
- Infinitely variable current control
- Demagnetize your parts in AC mode by slowly turning the current dial to zero
- Built-in automatic-reset circuit breaker
- May be used as the main power source for the Magnaflux MAG Kit modular bench inspection system

### P-70 Power Pack

P/N 190575 – 115v OR P/N 190575-1 - 230v

#### SPECIFICATIONS

- Length: 17 1/2" (44.5 cm)
- Width: 9" (23 cm) Height: 7 1/2" (19.1cm)
- Maximum Output\*: 750 amps, AC or HWDC
- Current Input Single Phase: 115 Volts, 50/60 Hertz; 230 Volts, 50/60 Hertz, single phase power
- Line Current: 26 amps @ 115 VAC; 13 amps @ 230 VAC
- Maximum Duty Cycle: 2 minutes ON, 2 minutes OFF
- Unit Weight: 35 lbs (15.9 kg)

### P-1500 Power Pack

P/N 198500 (230v)

P/N 198500-01 (460v)

#### SPECIFICATIONS

- Length: 22" (55.8 cm)
- Width: 9 1/2" (24.3 cm)
- Height: 9 1/2" (24.3 cm)
- Maximum Output\*: 1500 amps, AC or HWDC
- Current Input Single Phase: 230/460 Volts, 50/60 Hz 460 Volts, 50/60 Hertz, single phase power
- Line Current: 42 amps @ 230 VAC; 21 amps @ 460 VAC
- Maximum Duty Cycle: 2 minutes ON, 2 minutes OFF
- Unit Weight: 93 lbs (42.2 kg)

\*Current ratings are based on the use of two 15-foot length of 4/O Cable



## Stationary Power Packs : CD-Series

The CD units are power pack versions of our wet horizontal three phase output units.

---

### BENEFITS

- Most economical way to create a high magnetizing current with minimal power requirements
- For parts too large for traditional wet horizontal units or parts that need special handling

## Stationary Power Packs : CMD-Series

The CMD is the Multi Directional stationary power pack. This unit can easily be integrated with custom handling equipment, or used to update old wet horizontal units. The CMD Stationary Power Pack can come with 2 or 3 outputs. Many of the benefits found on the MD Wet Horizontal Unit apply to this CMD Stationary Power Pack as well.

---

### BENEFITS

- Single shot to find defects in both directions using multi directional capability
- For parts too large for traditional wet horizontal units or parts that need special handling
- Increase speed of process with up to three independent outputs

## CD-2060

### STANDARD FEATURES

#### Exterior:

- Current Assurance Indicator
- Large, easy to read Digital Ammeter Display
- Sturdy Flat top, use as a convenient work surface
- Ergonomic Display and Control Panel
- Remote Mag Receptacle (Use with ZB-100FMB)
- Dual 115 volt Accessory Outlets

#### Interior:

- PLC control, advanced technology reduce components and increase reliability
- Modular digital solid state circuitry
- Quick Break Circuitry
- Liquid Resistant panels, allow ventilation while inhibiting fluid intrusion

### SPECIFICATIONS

- 6,000 amp three phase rectified to FWDC output
- Duty Cycle 0.5 seconds on, 10 Seconds off (5% with Maximum of 5 seconds)
- Ultra Low Frequency reversing DC Demagnetization Pulsed
- Output (1/2 sec ON – 1 sec OFF for 10 cycles) Available
- Voltages: 230, 380, 415, 460, 575, 50 or 60 hertz, three phase power
- 60" (153 cm) x 31" (79 cm) Foot Print, allow 24" (61 cm) per side for ventilation

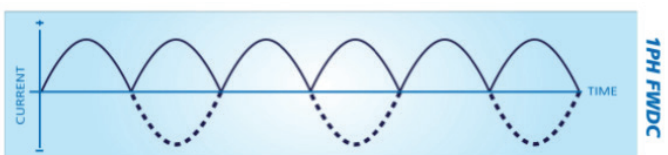
### OPTIONAL FEATURES

- NRTL Certification to CSA C22.2 No. 61010-1
- 

## CD- Series



## CMD- Series



## CD-2100

### STANDARD FEATURES

#### Exterior:

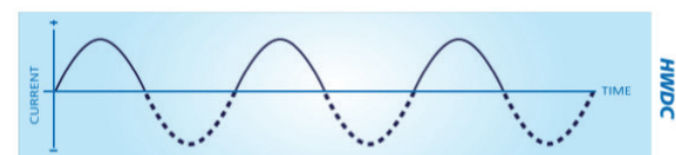
- Current Assurance Indicator
- Large, easy to read Digital Ammeter Display
- Sturdy Flat top, use as a convenient work surface
- Ergonomic Display and Control Panel
- Remote Mag Receptacle (Use with ZB-100FMB)
- Dual 115 volt Accessory Outlets

#### Interior:

- PLC control, advanced technology reduce components and increase reliability
- Modular digital solid state circuitry
- Quick Break Circuitry
- Liquid Resistant panels, allow ventilation while inhibiting fluid intrusion

### SPECIFICATIONS

- 10,000 amp three phase rectified to FWDC output
- Duty Cycle 0.5 seconds on, 20 Seconds off (2.5% with Maximum of 5 seconds)
- Ultra Low Frequency reversing DC Demagnetization Pulsed
- Output (1/2 sec ON – 1 sec OFF for 10 cycles) Available
- Voltages: 230, 380, 415, 460, 575, 50 or 60 hertz, three phase power
- 60" (153 cm) x 31" (79 cm) Foot Print, allow 24" (61 cm) per side for ventilation



## CMD-2030

### STANDARD FEATURES

#### Exterior:

- Color Touch Screen Interface
- Visual/audible current assurance alarms w/ log
- Two Large, Digital Ammeter Displays
- Independent X, Y, Output Current Type Selection
- Daily Reminder Alarms
  - UV Light
  - White Light
  - Bath Concentration
- 50 customer programmable recipes
- Automatic piece parts counter

#### Interior:

- PLC control, advanced technology reduce components and increase reliability
- Modular digital solid state circuitry
- Quick disconnect wiring
- Liquid Resistant panels, allow ventilation while inhibiting fluid intrusion

### SPECIFICATIONS

- 3000 amp FWDC/HWDC or 2500 amp AC multidirectional output; current capability
- Multidirectional power supply - Two outputs
  - Rapid Reversing FWDC or decaying AC Demagnetization
- Duty Cycle 0.5 seconds on, 10 Seconds off (5% with Maximum of 5 seconds)
- All Ratings based on 30 Feet of double 4/0 Cable
- Two Independently variable current controls
- Available Voltages: 230, 380, 415, 460, 575, 50 or 60 hertz, three phase power
- 60" (153 cm) x 31" (79 cm) Foot Print, allow 24"(61 cm) per side for ventilation

## CMD3-2060

### STANDARD FEATURES

#### Exterior:

- Color Touch Screen Interface
- Visual/audible current assurance alarms with alarm log
- Three Large, easy to read Digital Ammeter Displays
- Independent X, Y and Z Output Current Type Selection
- Daily Reminder Alarms
  - UV Light
  - White Light
  - Bath Concentration
- 50 customer programmable recipes
- Automatic piece parts counter

#### Interior:

- PLC control, advanced technology reduce components and increase reliability
- Modular digital solid state circuitry
- Quick disconnect wiring
- Liquid Resistant panels, allow ventilation while inhibiting fluid intrusion

## CMD-2060

### STANDARD FEATURES

#### Exterior:

- Color Touch Screen Interface
- Visual/audible current assurance alarms with alarm log
- Two Large, easy to read Digital Ammeter Displays
- Independent X, Y, Output Current Type Selection
- Daily Reminder Alarms
  - UV Light
  - White Light
  - Bath Concentration
- 50 customer programmable recipes
- Automatic piece parts counter

#### Interior:

- PLC control, advanced technology reduce components and increase reliability
- Modular digital solid state circuitry
- Quick disconnect wiring
- Liquid Resistant panels, allow ventilation while inhibiting fluid intrusion

### SPECIFICATIONS

- 6000 amp FWDC/HWDC or 5000 amp AC multidirectional output; current capability
- Multidirectional power supply - Two outputs
- Rapid Reversing FWDC or decaying AC Demagnetization
- Duty Cycle 0.5 seconds on, 10 Seconds off (5% with Maximum of 5 seconds)
- All Ratings based on 30 Feet of double 4/0 Cable
- Two Independently variable current controls
- Available Voltages: 380, 415, 460, 575, 50 or 60 hertz, three phase power
- 60" (153 cm) x 31" (79 cm) Foot Print, allow 24"(61 cm) per side for ventilation

### SPECIFICATIONS

- 6000 amp FWDC/HWDC or 5000 amp AC multidirectional output; current capability
- Multidirectional power supply - Three outputs
- Rapid Reversing FWDC or decaying AC Demagnetization
- Duty Cycle 0.5 seconds on, 10 Seconds off (5% with Maximum of 5 seconds)
- All Ratings based on 30 Feet of double 4/0 Cable
- Three Independently variable current controls
- Available Voltages: 380, 415, 460, 575, 50 or 60 hertz, three phase power
- 60" (153 cm) x 31" (79 cm) Foot Print, allow 24"(61 cm) per side for ventilation



## Stationary Power Packs : CSV-Series

Magnaflux understands some parts will not lend themselves to traditional units. Some of these parts are too large, some need special handling, and some are better processed dry. The Magnaflux Stationary Power Pack Series (CSV, CMD, and CD Power Packs) offers a solution to the parts that are too large for normal systems. Three independent outputs help to speed up processing time, and a pulse feature allows development of larger areas. These units feature 3 phase rectified to FWDC output.

---

### STANDARD FEATURES

- Most economical way to create a high magnetizing current with minimal power requirements.
- For parts too large for traditional wet horizontal units or parts that need special handling
- Increase speed of process with three independent outputs

## CSV-10

### STANDARD FEATURES

#### Exterior:

- Three Independent Current Controls
- One to Four Pulses selectable (to develop larger areas)
- One to Four Cycles (to rotate through the multiple vector output)
- Current Assurance Indicators
- Three Large, easy to read Digital Ammeter Display
- Remote Mag Receptacle (Use with ZB-100FMB)
- 115 Volt Accessory Outlet

#### Interior:

- PLC control, advanced technology reduce components and increase reliability
- RS-232 port for computer interface
- Modular digital solid state circuitry
- Quick Break Circuitry

### SPECIFICATIONS

- 10,000 amp three phase rectified to FWDC output
- Three Independent Bus Bar Outputs
- Reversing DC Demag-Ultra Low Frequency (Output 1 only)
- Current capability rated using 30 feet of 1,000 kcmil cable.
- Duty Cycle 0.5 seconds on, 20 Seconds off (2.5% with maximum of 2 seconds)
- Available Voltages: 380, 415, 460, 575, 50 or 60 hertz, three phase power

### OPTIONAL FEATURES

- Demagnetization on Outputs 2 & 3

## CSV-15

### STANDARD FEATURES

#### Exterior:

- Three Independent Current Controls
- One to Four Pulses selectable (to develop larger areas)
- One to Four Cycles (to rotate through the multiple vector output)
- Current Assurance Indicators
- Three Large, easy to read Digital Ammeter Display
- Remote Mag Receptacle (Use with ZB-100FMB)
- 115 Volt Accessory Outlet

#### Interior:

- PLC control, advanced technology reduce components and increase reliability
- RS-232 port for computer interface
- Modular digital solid state circuitry
- Quick Break Circuitry

### SPECIFICATIONS

- 15,000 amp three phase rectified to FWDC output
- Three Independent Bus Bar Outputs
- Reversing DC Demag-Ultra Low Frequency (Output 1 only)
- Current capability rated using 30 feet of 1,000 kcmil cable.
- Duty Cycle 0.5 seconds on, 20 Seconds off (2.5% with maximum of 2 seconds)
- Available Voltages: 380, 415, 460, 575, 50 or 60 hertz, three phase power

### OPTIONAL FEATURES

- Demagnetization on Outputs 2 & 3



## CSV-20

### STANDARD FEATURES

#### Exterior:

- Three Independent Current Controls
- One to Four Pulses selectable (to develop larger areas)
- One to Four Cycles (to rotate through the multiple vector output)
- Current Assurance Indicators
- Three Large, easy to read Digital Ammeter Display
- Remote Mag Receptacle (Use with ZB-100FMB)
- 115 Volt Accessory Outlet

#### Interior:

- PLC control, advanced technology reduce components and increase reliability
- RS-232 port for computer interface
- Modular digital solid state circuitry
- Quick Break Circuitry

### SPECIFICATIONS

- 20,000 amp three phase rectified to FWDC output
- Three Independent Bus Bar Outputs
- Reversing DC Demag-Ultra Low Frequency (Output 1 only)
- Current capability rated using 30 feet of 1,000 kcmil cable.
- Duty Cycle 0.5 seconds on, 20 Seconds off (2.5% with maximum of 2 seconds)
- Available Voltages: 380, 415, 460, 575, 50 or 60 hertz, three phase power

### OPTIONAL FEATURES

- Demagnetization on Outputs 2 & 3



*SB-2824 Demagnetizer  
with Optional Track and Carriage*



*S-66 Demagnetizer*

## Demagnetizers

Magnaflux demagnetization units remove any residual magnetism remaining after Magnaglo® and Magnavis® Magnetic Particle Inspection testing. Demagnetization of ferromagnetic parts and materials is often a prerequisite to final finishing or to ready an item for its ultimate use. Industrial demagnetizing is not an easy task, unless an effective demagnetizing system is used. It is especially difficult when the magnetic field must be reduced to a very low level. Compact in size and ruggedly built, Magnaflux Demagnetization equipment offers a fast and efficient method for demagnetizing a broad variety of part types and sizes following the magnetic particle inspection process.

### Typical Applications for Demag Units:

- Demagnetizing parts that have been subjected to Magnavis and Magnaglo magnetic particle inspection
- Removing residual magnetism in parts intended for use near magnetic instrumentation
- Demagnetizing parts with bearing or journal surfaces
- Demagnetizing parts after contact with magnetic chucks or lifting magnets

## S-66

The Magnaflux S-66 Demagnetizer is a compact tabletop unit designed to be conveniently integrated into an existing magnetic particle inspection system. Oil and waterproof by virtue of its plastic impregnated glass coating, the S-66 can be flush mounted to the work surface with supplied angle supports to facilitate easy part insertion by the operator.

### STANDARD FEATURES

- 4600 Amp turns
- 6" wide x 6" high window

### SPECIFICATIONS

- Size: 15.5"L x 9.4"W x 14.4"H (39.4cmL x 23.9cmW x 36.6cmH)
- Weight: 85 lb. (38.6kg)
- Available Voltages: 115, 230 460, 50 or 60 hertz, single phase power

## S-1212

The Magnaflux S-1212 Demagnetizer is a compact tabletop unit designed to be conveniently integrated into an existing magnetic particle inspection systems. Oil and waterproof by virtue of its plastic-impregnated glass coating, the S-1212 can be flush mounted to the work surface with supplied angle supports to facilitate easy part insertion by the operator.

### STANDARD FEATURES

- 7500 Amp turns
- 12" wide x 12" high window

### SPECIFICATIONS

- Size: 24"L x 11.75"W x 24"H (61cmL x 29.8cmW x 61cmH)
- Weight: 285 lb. (129.3kg)
- Available Voltages: 230, 460, 50 or 60 hertz, single phase power



## SB-1416

### STANDARD FEATURES

- 8000 Amp turns
- 14" wide x 16" high window
- User friendly control panel, with one touch demag
- Adjustable shot time

### SPECIFICATIONS

- Size: 30"L x 44.4"W x 56.31H (76.2cm x 112.8cm x 150.6cm)
- Weight: 460 lb. (208.7kg)
- Available Voltages: 380, 415, 460, 575, 50 or 60 hertz, single phase power

### OPTIONAL FEATURES

- 12,000 Amp turns (50% higher)
- Track and Carriage

## SB-1619

### STANDARD FEATURES

- 8000 Amp turns
- 16" wide x 19" high window
- User friendly control panel, with one touch demag
- Adjustable shot time

### SPECIFICATIONS

- Size: 30"L x 44.4"W x 59.31H (76.2cm x 112.8cm x 150.6 cm)
- Weight: 625 lb. (283.5kg)
- Available Voltages: 380, 415, 460, 575, 50 or 60 hertz, single phase power

### OPTIONAL FEATURES

- 12,000 Amp turns (50% higher)
- Track and Carriage

## SB-2824

### STANDARD FEATURES

- 8000 Amp turns
- 28" wide x 24" high window
- User friendly control panel, with one touch demag
- Adjustable shot time

### SPECIFICATIONS

- Size: 30"L x 56.9"W x 64.31H (76.2cm x 144.5cm x 163.3cm)
- Weight: 810 lb. (367.4kg)
- Available Voltages: 380, 415, 460, 575, 50 or 60 hertz, single phase power

### OPTIONAL FEATURES

- 12,000 Amp turns (50% higher)
- Track and Carriage

# Magnetic Particle Inspection Accessories and Materials

DISTRIBUÉ PAR / DISTRIBUTED BY:



QUEBEC

164, St-Jean-Baptiste  
Mercier, QC J6R 2C2  
T : (450) 691-9090

ONTARIO

275 Sheldon Drive, Unit 3  
Cambridge, ON N1T 1A3  
T : (519) 894-9069

[www.qnde.ca](http://www.qnde.ca)

# Magnetic Particle Inspection Accessories

## CONTACT PADS & PLATES

Magnaflux long lasting copper braided contact pads and lead contact plates prevent arc burn by helping to maintain proper electrical contact between test parts and contact heads. Available in a variety of sizes to fit most MPI units.

**Part Number: 18948** - Double-Braided Pad with V-Block

Heavy copper braid provides contact over a larger surface area. Built with neoprene, the V-Block base centers and supports test parts. Can be reversed to provide two wear faces. Fits all units except A-915 and smaller Mag Series units.



## CENTRIFUGE TUBES & STANDS

Magnaflux centrifuge tubes are individually calibrated to monitor the precise concentrations of Magnaglo and Magnavis particles in baths, as well as the contamination levels of their solutions.

**Part Number: 8493** - Centrifuge Tube for Magnaglo 14A, 14AM and 20B Fluorescent Particles.

Measures in increments between 0 and 1.0 ml in 0.05 increments.

**Part Number: 1837A** - Aluminum Centrifuge Stand. Safely holds centrifuge tubes when mixing bath concentrations.



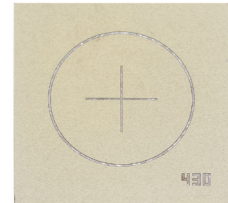
## TEST PIECES

### Quantitative Quality Indicator Test Pieces

Quantitative Quality Indicators (QQI) are magnetic particle test pieces with artificial defects that are used to verify field direction and relative strength. They are also used to balance multi-directional fields and to increase productivity by minimizing magnetizing shots. The QQI Indicator Shims are packaged in sets of five.

**Part Number: 625551** - Standard QQI Model #KSC-230.

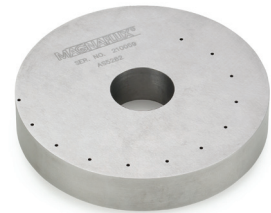
Basic circular and cross bar flaw configuration suitable for longitudinal and circular fields. Flaw depth of 30% of shim thickness, .002" thick.



### Tool Steel Test Ring

The Magnaflux Tool Steel Test Ring is a magnetic particle test piece with pre-drilled holes to simulate subsurface discontinuities. It provides a reliable method of verifying magnetic particle system performance when actual test parts with discontinuities are not available.

**Part Number: 159999** - Tool Steel Test Ring



## FIELD INDICATORS

Magnaflux rugged, pocket-size 10 and 20 gauss field indicators are used to measure residual magnetism remaining in parts after magnetization.

**Part Number: 505056** - 10 Gauss Calibrated Field Indicator.

10 gauss certified field indicator accurate to +0.5 Gauss with a scale range of 10-0-10. Certification is provided with meter.

**Part Number: 105645** - 20 Gauss Calibrated Field Indicator.

20 gauss certified field indicator accurate to +1.0 Gauss with a scale range of 20-0-20. Certification is provided with meter.



## QUICK BREAK TESTER

### Quick Break Tester (QB1)

The Quick Break Tester quickly and accurately confirms function status of "quick break" circuitry in the three phase FWDC magnetic particle units.

**Part Number: 148335**



# CABLES, CONNECTORS & REMOTE DEVICES

## Cables

Rubber covered flexible cables are available in standard lengths of 15' (4.57m) and 20' (6.09m) with a choice of either end or lug connectors. Custom cables and replacement connectors are also available.

### Part Number:

- 11306 - 15' (4.57m) lugs at both ends
- 11307 - 15' (4.57m) lugs and either end
- 11308 - 15' (4.57m) either ends at both ends
- 11314 - 20' (6.09m) either ends at both ends

## Connectors

Connectors for attaching 4/0 cables to Magnaflux magnetizing equipment, including wet benches, power packs and mobile units.

### Part Number:

- 1238 – Either end connector (allows quick cable disconnect for maximum flexibility)
- 1238A - Connector boot only
- 1574 – Either end lug adapter (changes lug terminal to either end terminal)
- 2590 - 4/0 lug for permanent attachment to magnetizing equipment



## COILS

### Coils for Bench Units

Five-turn coils in sizes from 12" to 25" that conform to most parts and produce optimal magnetic field applications.

### Part Number:

- 28501 - 12" (30 cm) Coil
- 28511 - 16" (41 cm) Coil
- 28531 - 20" (51 cm) Coil
- 28541 - 25" (64 cm) Coil



## Flat Magnetic Coil

For non-contact magnetic particle inspection of small parts such as fasteners and ring-like parts. Can be used with any magnetic particle unit or power pack to allow for the quick, easy processing of multiple parts at one time.

### Part Number: 611700 - Flat Magnetic Coil



## Clam Shell Coil Assembly

### Part Number: 623031 - 19.7" (50 cm) Clam Shell Coil Assembly



## PROD SETS

Magnaflux prod sets are convenient handheld electrodes used for conducting sectional inspections of welds, casting, forgings and other large and complex part shapes. Comfortable, pistol style grips and out-of-the-way cable hookups make it easy for testing parts that are not wet bench friendly.

### Standard Prod Sets

**Part Number: 622088** - For use with M-2000 Series units

**Part Number: 157662** - For use with P-Units

### Dual Horizontal Prod Assemblies

**Part Number: 622499** - For use with M-Series units

**Part Number: 157781** - For use with P-Series units

### Digital Amperage Meter Kit

The Magnaflux Digital Amperage Meter Kit is specifically designed for NDT applications and will certify the amperage on all MPI equipment manufactured by Magnaflux up to 10,000amps. Checks AC, HWDC, 1 Phase FWDC, and 3 Phase FWDC.

### Part Number: 622350 - Digital Amperage Meter Kit



# MAGNETIC PARTICLE INSPECTION MATERIALS

## OIL VEHICLE

### Magnaglo Carrier II Oil

Magnaglo Carrier II Oil is used to suspend wet (oil) method magnetic particles when water is not used as a suspension vehicle. It has virtually no odor or fluorescence and possesses a flash point in excess of 200°F allowing it to meet OSHA requirements for a Class III B liquid.

**Specification Compliance:** ASTM E 1444, ASTM E 709, Pratt & Whitney PMC 1887, A-A-59230, ASME B & PV Code, Sec. V, AMS-2641.

#### Part Number & Container Size:

01-2122-30 20 Gal. Drum

01-2122-45 55 Gal. Drum



## FLUORESCENT WET METHOD PARTICLES

### Magnaglo 14A Fluorescent Magnetic Powder

Magnaglo 14A is intended for use in high sensitivity, wet method magnetic particle inspection and may be suspended in either a petroleum-based vehicle (oil) such as Carrier II or water.

**Specification Compliance:** ASTM E 1444, ASME B&PV Code, Sec. V, NAVSEA 250-1500-1, ASTM E-709 (E-138), MIL-STD-271, AMS-3044, Cummins IS-16048-13, MIL-STD-2132, Boeing PS 21201, British Std. B.S. 4069.

**Applications:** Magnaglo 14A is used to locate fine surface and slightly subsurface discontinuities such as inclusions, seams, shrink cracks, tears, laps, flakes, welding defects, grinding cracks, quenching cracks, and fatigue cracks.

#### Part Number & Container Size:

01-0130-71 1 lb. Plastic Jar (6)



### Magnaglo 14A Redi-Bath

Magnaglo 14A Redi-Bath is a prepared liquid concentrate of 14A Fluorescent Powder, wetting agents, anti-foaming agents, and long lasting rust inhibitors.

**Specification Compliance:** ASTM E 1444, ASTM E 709, NAVSEA 250-1500-1, MIL-STD-271, MIL-STD-2132, ASME B & PV Code, Sec. V.

**Applications:** Magnaglo 14A Redi-Bath is used to locate fine surface and slightly subsurface discontinuities such as inclusions, seams, shrink cracks, tears, laps, flakes, welding defects, grinding cracks, quenching cracks and fatigue cracks.

#### Part Number & Container Size:

01-9130-41 27 oz. Container (6)



DISTRIBUÉ PAR / DISTRIBUTED BY:



QUEBEC

164, St-Jean-Baptiste  
Mercier, QC J6R 2C2  
T : (450) 691-9090

ONTARIO

275 Sheldon Drive, Unit 3  
Cambridge, ON N1T 1A3  
T : (519) 894-9069

[www.qnde.ca](http://www.qnde.ca)



**MAGNAFLUX®**

155 Harlem Avenue, Glenview, IL 60025