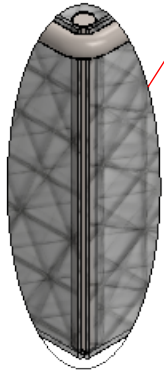
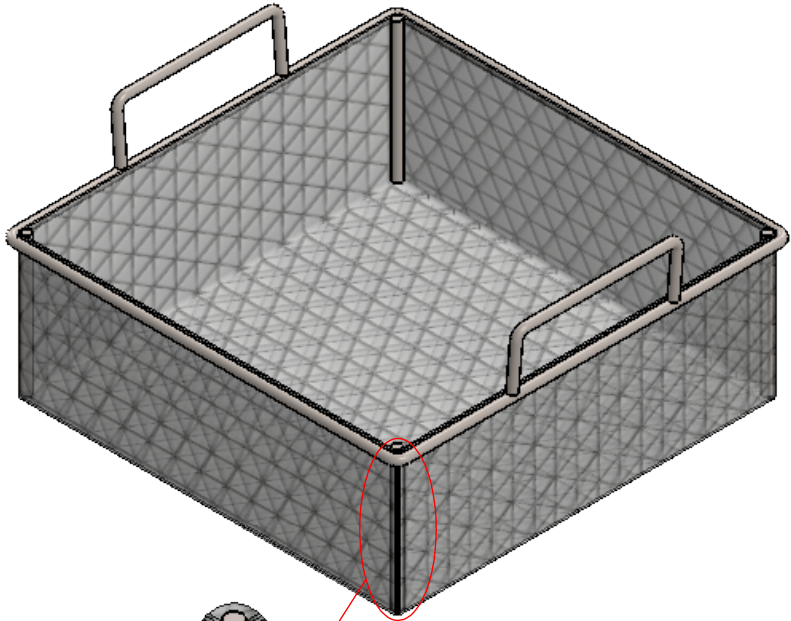
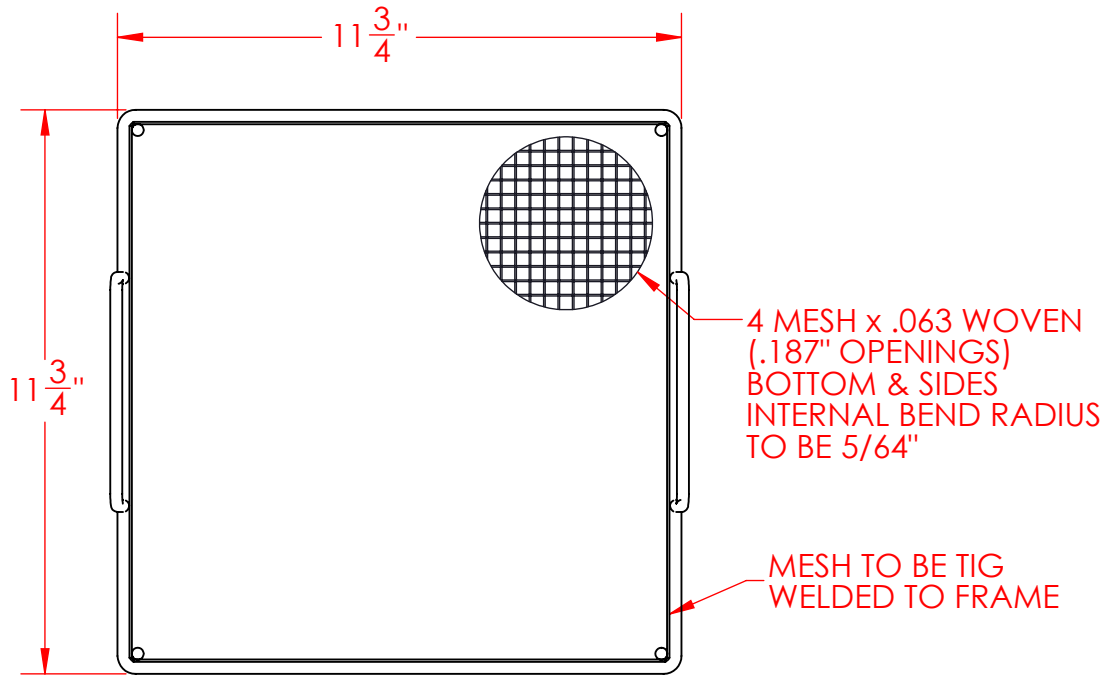
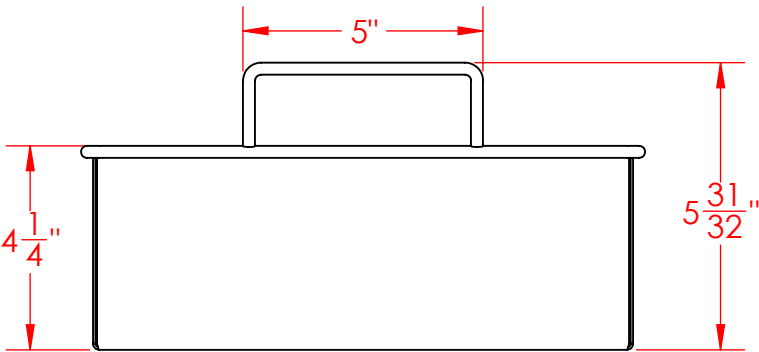
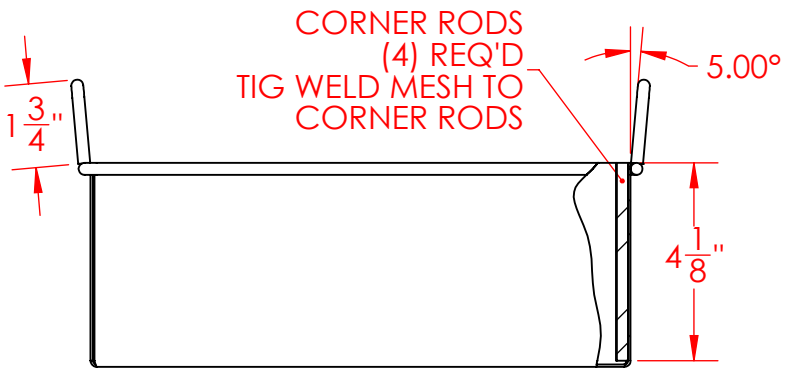


	DATE	BY	REVISION
A	2/29/2015	KPV	INITIAL DESIGN
B	3/23/2016	KPV	Height, Mesh and Rod changes made
C	6/29/2016	KPV	Epolish added, mesh to be tig welded to frame



OPEN CORNERS, NO MESH OVERLAP
TIG WELD INDIVIDUAL
MESH WIRES TO CORNER RODS

- NOTE:
1. ALL ROD TO BE $\phi 1/4"$ UNLESS OTHERWISE NOTED
 2. FINISH TO BE ELECTRO-POLISH
 3. MESH TO BE TIG WELDED TO ROD FRAME USING 304L SS FILLER MATERIAL
 4. MATERIAL TO BE 304L SS



ESTIMATED Wt. (lbs.): 2.0

TOLERANCES UNLESS NOTED OTHERWISE
ANGLES: ± 2 DEGREES
FRACTIONS $\pm 1/16$
.X $\pm .125$
.XX $\pm .063$
.XXX $\pm .032$

THIRD ANGLE PROJECTION



MATERIAL: See Note
FINISH: See Note

REVISION SHEET SIZE

C B

DISTRIBUÉ PAR / DISTRIBUTED BY: QUEBEC 164, St-Jean-Baptiste
Mercier, QC J6R 2C2
T: (450) 691-9090
ONTARIO 275 Sheldon Drive, Unit 3
Cambridge, ON N1T 1A3
T: (519) 894-9069
www.qnde.ca



PART DESCRIPTION
Frameless Body Basket w/ Dual Grip Handles

PART NUMBER
QNL-121204 - Rev C
SCALE: NONE
SHEET 1 OF 1
CUSTOMER