

XRS-MD Multi-Directional Series

Front and Rotational Side beam in one unit



Making the unseen seen

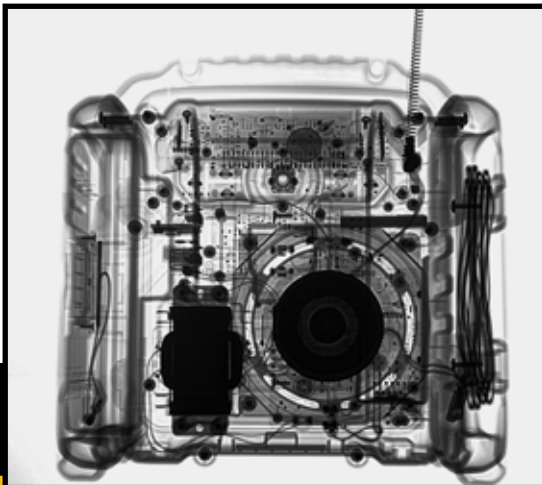
Versatile and Adaptable

Blue Front beam cap

Compatible with existing accessories
Minimized image edge fade

Gold Side beam cap

Rotates 360°
Operate in tight space



DISTRIBUTED BY/DISTRIBUÉ PAR:

QNDE
QUALITY NDE LIMITED

QUEBEC:

164, St-Jean-Baptiste,
Mercier, QC J6R 2C2
Tel: 450-691-9090
info@qnnde.ca

www.qnnde.ca

ONTARIO:

275, Sheldon Drive, Unit 3,
Cambridge, ON N1T 1A3
Tel: 519-894-9069
nadams@qnnde.ca

1-800-361-3630

ALBERTA:

7307, 50 street NW
Edmonton, AB T6B 2J9
Tel: 587-689-6811
admin.west@qnnde.ca



All-New Graphic Display



- Larger text and graphics
- Viewable in direct sunlight
- Colored text and backlight
- Extended temperature range
- Help button – access on-board context-sensitive help
- QR Code - access additional information online

Integrated Arca Swiss tripod mount



Field-Interchangeable Caps



- Adapt to the situation
- Direct X-ray beam **forward** or any angle out the **side**

Lemo connector above battery for easier access

		XRS3MD	XRS4MD
Dimensions	(with battery)	L: 15.42" (39.17 cm)	L: 19.26" (48.92 cm)
	(with Picatinny Rails)	W: 4.26" (10.82 cm)	W: 4.80" (12.19 cm)
	(without key)	H: 5.83" (14.81 cm)	H: 7.05" (17.91 cm)
Weight	(with battery)	11.80 lbs. (5.40 kg)	18.30 lbs (8.30 kg)
Average Output Dose*	Forward	3 mR per pulse	5 mR per pulse
	Side	0.6 mR per pulse	2 mR per pulse
Pulse Rate		15 pulses per second	9 pulses per second
Pulses per Battery charge		5500	3000
Operating Temperature		-4 to 158 °F (-20 to 70 °C)	-4 to 158 °F (-20 to 70 °C)
IP Rating		IP 54	IP 54

* Dose measured at 12" (30 cm) from source

* screen images simulated

Contact info@qnide.ca or
1-800-361-3630 for more
information or to get a quote

DISTRIBUÉ PAR / DISTRIBUTED BY:



QUEBEC:
164 St-Jean Baptiste
Mercier, QC J6R 2C2
(514) 691-9090
info@qnide.ca

ONTARIO:
275 Sheldon Drive, Unit 3
Cambridge, ON N1T 1A3
(519) 894-9053
nadams@qnide.ca

ALBERTA:
7307 50 St NW
Edmonton, AB T6B 2J9
(587) 689-6811
admin.west@qnide.ca

1-800-361-3630
WWW.QNIDE.CA

