



Sampson Bag Filter Housings

Sampson's bag filter housings are characterized with high precision, high flow capacity, easy installation and maintenance. Their unique body design made of uPVC makes them ideal for corrosive environments and processes.

Industries where it can be used are:

- petrochemical
- construction
- cosmetic
- chemical
- medical
- textile,
- food (waste water), etc.

Product Features

1. Most parts of this filter are made of uPVC
2. uPVC material is resistant to corrosion
3. Light weight design and very easy to install
4. Side entry and bottom outlet
5. The distribution system is from top (side entry) to bottom
6. The lid and the body are connected using flanges to ensure the housing can withstand higher pressure

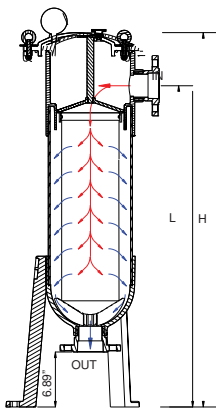


FILTRATION

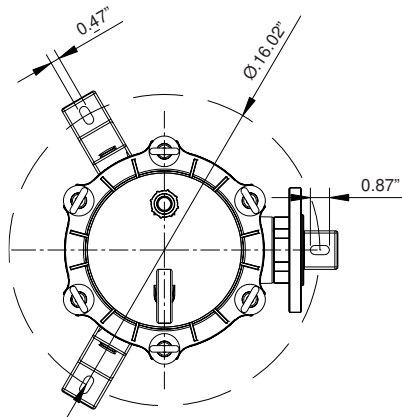
Type	Size	Bag size	In / Out	L	Max pressure	Flow
FTR-PVC-90	8.86"Ø- 32.26"H	7"Ø - 17" long (Bag #1)	FLG 2"ANSI 2.5"NTP	26.18"	100 psi	90 GPM
FTR-PVC-180	8.86"Ø- 47.29"H	7"Ø - 32" long (Bag #2)	FLG 2"ANSI 2.5"NTP	41.14"	100 psi	180 GPM

Note:

- Compatible with all filter bags (all micron sizes and materials)
- Max. operating temperature is 45°C,
- Size of pressure gauge holes on cover is 1/4"



Water flow diagram



Plan drawing



Filters also available - polypropylene, nylon, PTFE (polytetrafluoroethylene) or polyester; available in various micron sizes (1000, 500, 400, 200, 100, 50, 20, 5 or 1 micron).